

Коммерческие стаканомоечные и посудомоечные машины под столешницей

Технические характеристики

По вопросам продаж и поддержки обращайтесь:

Алматы (727)345-47-04
Ангарск (3955)60-70-56
Архангельск (8182)63-90-72
Астрахань (8512)99-46-04
Барнаул (3852)73-04-60
Белгород (4722)40-23-64
Благовещенск (4162)22-76-07
Брянск (4832)59-03-52
Владивосток (423)249-28-31
Владикавказ (8672)28-90-48
Владимир (4922)49-43-18
Волгоград (844)278-03-48
Вологда (8172)26-41-59
Воронеж (473)204-51-73
Екатеринбург (343)384-55-89

Иваново (4932)77-34-06
Ижевск (3412)26-03-58
Иркутск (395)279-98-46
Казань (843)206-01-48
Калининград (4012)72-03-81
Калуга (4842)92-23-67
Кемерово (3842)65-04-62
Киров (8332)68-02-04
Коломна (4966)23-41-49
Кострома (4942)77-07-48
Краснодар (861)203-40-90
Красноярск (391)204-63-61
Курск (4712)77-13-04
Курган (3522)50-90-47
Липецк (4742)52-20-81

Магнитогорск (3519)55-03-13
Москва (495)268-04-70
Мурманск (8152)59-64-93
Набережные Челны (8552)20-53-41
Нижний Новгород (831)429-08-12
Новокузнецк (3843)20-46-81
Ноябрьск (3496)41-32-12
Новосибирск (383)227-86-73
Омск (3812)21-46-40
Орел (4862)44-53-42
Оренбург (3532)37-68-04
Пенза (8412)22-31-16
Петрозаводск (8142)55-98-37
Псков (8112)59-10-37
Пермь (342)205-81-47

Ростов-на-Дону (863)308-18-15
Рязань (4912)46-61-64
Самара (846)206-03-16
Санкт-Петербург (812)309-46-40
Саратов (845)249-38-78
Севастополь (8692)22-31-93
Саранск (8342)22-96-24
Симферополь (3652)67-13-56
Смоленск (4812)29-41-54
Сочи (862)225-72-31
Ставрополь (8652)20-65-13
Сургут (3462)77-98-35
Сыктывкар (8212)25-95-17
Тамбов (4752)50-40-97
Тверь (4822)63-31-35

Тольятти (8482)63-91-07
Томск (3822)98-41-53
Тула (4872)33-79-87
Тюмень (3452)66-21-18
Ульяновск (8422)24-23-59
Улан-Удэ (3012)59-97-51
Уфа (347)229-48-12
Хабаровск (4212)92-98-04
Чебоксары (8352)28-53-07
Челябинск (351)202-03-61
Череповец (8202)49-02-64
Чита (3022)38-34-83
Якутск (4112)23-90-97
Ярославль (4852)69-52-93

Россия +7(495)268-04-70

Казахстан +(727)345-47-04

Беларусь +(375)257-127-884

Узбекистан +998(71)205-18-59

Киргизия +996(312)96-26-47

эл.почта: sir@nt-rt.ru || сайт: <https://sammic.nt-rt.ru/>

GLASSWASHER AX-40

Rack size 400 mm x 400 mm and door clearance 300 mm.



SALES DESCRIPTION

- ✓ Sani-Control: guaranteed disinfection.
- ✓ Embedded bodywork and easy-grip door: hygienic and ergonomic.
- ✓ Exclusive Hydroblade™ washing arms: maximum effectiveness.
- ✓ 3-stage filtering system.
- ✓ Double-walled body (partial).

Sani-Control guarantee

- ✓ GUARANTEED DISINFECTION in compliance with standard DIN 10534.
- ✓ THERMAL LOCK function: ensures that rinsing will be carried out at the ideal temperature to disinfect the dishes.

New recessed bodywork

- ✓ Ergonomic design with rounded corners to prevent the accumulation of dirt and facilitate cleaning.
- ✓ Compact tank volume (50% water saving compared to the previous range).
- ✓ Embedded basket guides.

Hydroblade™ washing arms

- ✓ Redesigned nozzles for greater washing performance.
- ✓ The “monoblock” design delivers durability and resistance to impacts.
- ✓ 30% savings in water consumption during rinsing compared to the previous range.

3-stage filter system: surface, tank and extraction

- ✓ Keeps the washing water in optimal conditions to maintain constant washing performance.
- ✓ The surface filters feature an “easy-on” design and can be quickly removed without having to disconnect the washing arms.

“Easy grip” door: new design with integrated door handle

- ✓ Designed to have no corners or areas that are difficult to access: prevents deposits of dirt and facilitates cleaning.
- ✓ Its ergonomic handle provides a perfect grip, even with wet hands.
- ✓ 300 mm load capacity: high versatility for washing a wide range of glasses and even medium-sized dishes.
- ✓ Double-walled door with safety microswitch and high quality seal.

Warewashing, made simple

- ✓ Active Xperience: simple and intuitive use.
- ✓ Dedicated cycles: selection of the ideal washing programme using icons.
- ✓ Electronic control panel with IP65 humidity protection.

You will never WASH ALONE

- ✓ Tech Services: our team of technicians will help you so that your machine is always ready for use.
- ✓ Design Services: tell us what your needs are and we will advise you.
- ✓ 60 years of experience and know-how at your disposal.

INCLUDES

- ✓ Rinse aid pump.
- ✓ 1 glasses basket.
- ✓ 1 mixed basket (plates).
- ✓ 1 small basket for cutlery.

OPTIONAL

- ☐ Detergent dosing kit.
- ☐ Overflow drainage pump. Tank water renewal by the principle of density.
- ☐ Double-level accessory for washing two baskets at the same time.

ACCESSORIES

- ☐ Manual water softeners
- ☐ Automatic water softeners
- ☐ 400 x 400 mm baskets
- ☐ Inserts & supplements
- ☐ High feet kit
- ☐ Reverse osmosis devices OS-140
- ☐ Dosing equipments front AX / UX glass- and undercounter dishwashers
- ☐ Double rack kits for AX/UX

SPECIFICATIONS

Basket dimensions: 400 mm x 400 mm

Useful height: 300 mm

Cycle duration: 120 / 150 / 210" (Optional: 90 / 120 / 180")

Production baskets / hour: 30 / 24 / 17 (Optional: 40 / 30 / 20)

Boiler capacity: 3.2 l

Wash tank capacity: 9 l

Water consumption/cycle: 2.2 l

Energy consumption

- ✓ Water consumption/cycle (kWh): 0,17 kWh
- ✓ Tank filling consumption: 0,39 kWh

Loading

- ✓ Pump: 250 W / 0.33 Hp
- ✓ Tank: 1200 W
- ✓ Boiler: 2500 W
- ✓ Total loading: 2750 W

Electrical connection: .

External dimensions (W x D x H)

- ✓ Width:470 mm
- ✓ Depth: 537 mm
- ✓ Height: 710 mm

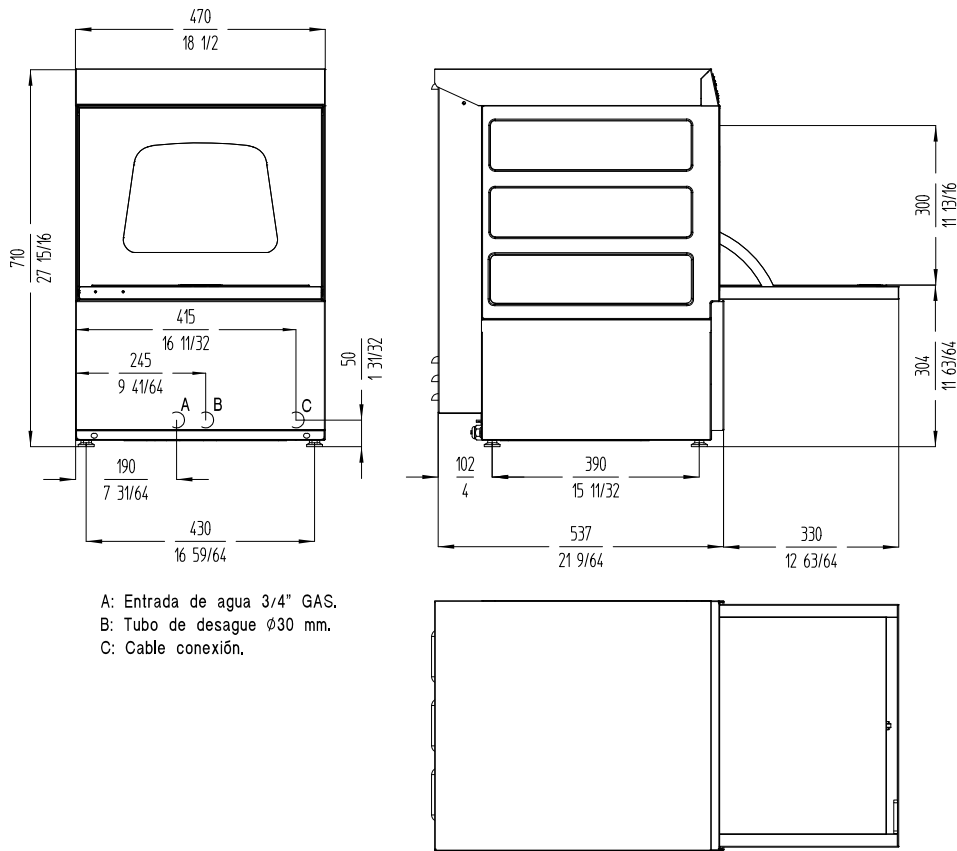
Noise level (1m.): <69 dB(A)

Crated dimensions
525 x 615 x 820 mm

AVAILABLE MODELS

1303080	AX-40 230/50/1
1303081	AX-40 220/60/1
1303087	AX-40B 230/50/1
1303088	AX-40B 220/60/1

* Ask for special versions availability



GLASSWASHER UX-40C ISO DD

Rack size 400 x 400 mm and door clearance 300 mm. Constant temperature rinsing system and double-skinned construction.



SALES DESCRIPTION

Sani-Control: guaranteed disinfection.
Embedded bodywork and easy-grip door: hygienic and ergonomic.
Double-walled body: insulation and energy efficiency.
Exclusive Hydroblade™ washing arms: maximum effectiveness.
3-stage filtering system.

Sani-Control guarantee

- ✓ GUARANTEED DISINFECTION in compliance with standard DIN 10534.
- ✓ THERMAL LOCK function: Ensures that rinsing will be carried out at the ideal temperature to disinfect the dishes.
- ✓ CONSTANT HIGH TEMPERATURE RINSE system for optimal disinfection.
- ✓ The PRESSURE PUMP guarantees effective high-pressure rinsing.

New recessed bodywork

- ✓ Ergonomic design with rounded corners to prevent the accumulation of dirt and facilitate cleaning.
- ✓ Compact tank volume (50% water saving compared to the previous range).
- ✓ Embedded basket guides

Double-Walled (Ultra ISO)

- ✓ Double-Walled Structure: thermo-acoustic insulation to attenuate the sound level and improve energy efficiency.

Hydroblade™ washing arms

- ✓ Redesigned nozzles for greater washing performance.
- ✓ The “monoblock” design delivers durability and resistance to impacts.
- ✓ 30% savings in water consumption during rinsing compared to the

previous range.

3-stage filter system: surface, tank and extraction

- ✓ Keeps the washing water in optimal conditions to maintain constant washing performance.
- ✓ The surface filters feature an “easy-on” design and can be quickly removed without having to disconnect the washing arms.

“Easy grip” door: new design with integrated door handle

- ✓ The integration of the components provides greater resistance and robustness.
- ✓ Designed to have no corners or areas that are difficult to access: prevents deposits of dirt and facilitates cleaning.
- ✓ Its ergonomic handle provides a perfect grip, even with wet hands.
- ✓ Double-walled door with safety microswitch and high quality seal
- ✓ 30 cm load capacity: high versatility for washing a wide range of glasses and even medium-sized dishes.

Premium warewashing

- ✓ Ultra Xperience: high performance, without complications.
- ✓ Soft start: progressive start-up of the washing pump to protect fragile items.
- ✓ Colour LCD Display: intuitive communication of the machine status by means of messages, colour codes and icons.
- ✓ Dedicated cycles: selection of the ideal washing programme using icons.
- ✓ Adaptable: allows the main parameters of the machine to be adjusted to the needs of each user.
- ✓ TEMPERATURE DISPLAY
- ✓ Wash Plus+ function: increases the intensity of the wash cycle for greater cleaning performance
- ✓ Control panel with IP65 humidity protection.

You will never WASH ALONE

- ✓ Tech-Services: our team of technicians will help you so that your machine is always ready for use.
- ✓ Design Services: tell us what your needs are and we will advise you.
- ✓ 60 years of experience and know-how at your disposal.

INCLUDES

- ✓ Drainage pump with level sensor. Proactive tank water renewal.
- ✓ Detergent Dispenser.
- ✓ 1 glasses basket.
- ✓ 1 mixed basket (plates).
- ✓ 1 small basket for cutlery.

OPTIONAL

- ☐ Manual resin regeneration
- ☐ water softener.

SPECIFICATIONS

Basket dimensions: 400 mm x 400 mm

Useful height: 300 mm

Cycle duration: 90 / 120 / 150 / 180"

Production baskets / hour: 40 / 30 / 24 / 20

Boiler capacity: 4.5 l

Wash tank capacity: 9 l

Consumption and savings

Water consumption / cycle: 1.9 l

Automatic saving mode in: 25'

Automatic switch-off: 120'

Energi consumption

Energy consumption per cycle: 0,15 kWh

Initial tank filling consumption: 0,39 kWh

Loading__

- ✓ Pump: 250 W / 0.33 Hp
- ✓ Tank: 1200 W
- ✓ Boiler: 2800 W
- ✓ Total loading: 3050 W

External dimensions (W x D x H)

- ✓ Width: 470 mm
- ✓ Depth: 540 mm
- ✓ Height: 710 mm

Net weight: 42 kg

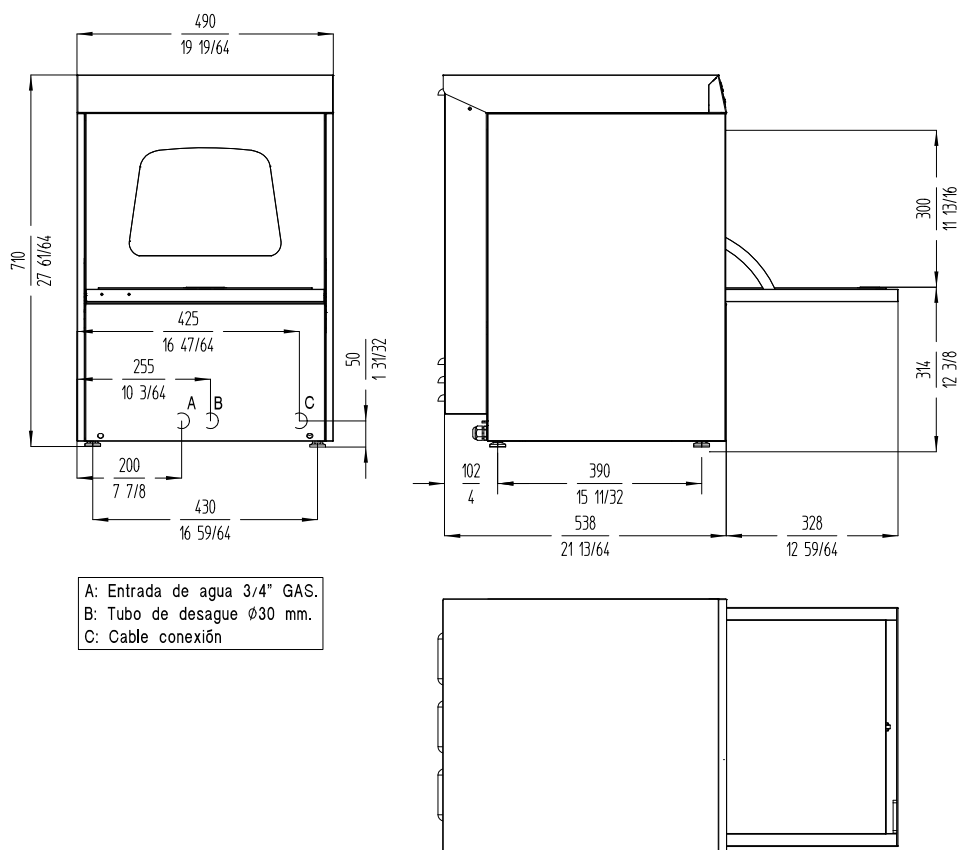
Crated dimensions

525 x 615 x 820 mm

AVAILABLE MODELS

1303148 UX-40SBC 230/50/1 DD

* Ask for special versions availability



GLASSWASHER UX-40 ISO

Rack size 400x400mm and door clearance 300 mm. Double-skinned construction.



SALES DESCRIPTION

Sani-Control: guaranteed disinfection
Embedded bodywork and easy-grip door: hygienic and ergonomic
Double-walled body: insulation and energy efficiency
Exclusive Hydroblade™ washing arms: maximum effectiveness.
3-stage filtering system.

Sani-Control guarantee

- ✓ **GUARANTEED DISINFECTION** in compliance with standard DIN 10534.
- ✓ **THERMAL LOCK** function: Ensures that rinsing will be carried out at the ideal temperature to disinfect the dishes.

New recessed bodywork

- ✓ Ergonomic design with rounded corners to prevent the accumulation of dirt and facilitate cleaning.
- ✓ Compact tank volume (50% water saving compared to the previous range).
- ✓ Embedded basket guides

Double-Walled (Ultra ISO)

- ✓ **Double-Walled Structure:** thermo-acoustic insulation to attenuate the sound level and improve energy efficiency

Hydroblade™ washing arms

- ✓ Redesigned nozzles for greater washing performance.
- ✓ The “monoblock” design delivers durability and resistance to impacts.
- ✓ 30% savings in water consumption during rinsing compared to the previous range.

3-stage filter system: surface, tank and extraction

- ✓ Keeps the washing water in optimal conditions to maintain constant washing performance.
- ✓ The surface filters feature an “easy-on” design and can be quickly removed without having to disconnect the washing arms.

“Easy grip” door: new design with integrated door handle

- ✓ The integration of the components provides greater resistance and robustness.
- ✓ Designed to have no corners or areas that are difficult to access: prevents deposits of dirt and facilitates cleaning.
- ✓ Its ergonomic handle provides a perfect grip, even with wet hands.
- ✓ Double-walled door with safety microswitch and high quality seal
- ✓ 30 cm load capacity: high versatility for washing a wide range of glasses and even medium-sized dishes.

Premium warewashing

- ✓ **Ultra Xperience:** high performance, without complications.
- ✓ **Soft start:** progressive start-up of the washing pump to protect fragile items.
- ✓ **Colour LCD Display:** intuitive communication of the machine status by means of messages, colour codes and icons.
- ✓ **Dedicated cycles:** selection of the ideal washing programme using icons.
- ✓ **Adaptable:** allows the main parameters of the machine to be adjusted to the needs of each user.
- ✓ **TEMPERATURE DISPLAY**
- ✓ **Wash Plus+ function:** increases the intensity of the wash cycle for greater cleaning performance
- ✓ **Control panel** with IP65 humidity protection.

You will never WASH ALONE

- ✓ **Tech-Services:** our team of technicians will help you so that your machine is always ready for use.
- ✓ **Design Services:** tell us what your needs are and we will advise you.
- ✓ 60 years of experience and know-how at your disposal.

INCLUDES

- ✓ Rinse aid pump.
- ✓ 1 mixed basket (plates).
- ✓ 1 glasses basket.
- ✓ 1 small basket for cutlery.

OPTIONAL

- ☐ Detergent dosing kit.
- ☐ Manual resin regeneration water softener.
- ☐ Drainage pump with level sensor. Proactive tank water renewal.
- ☐ Double-level accessory for washing two baskets at the same time.

ACCESSORIES

- ☐ Manual water softeners
- ☐ Automatic water softeners
- ☐ 400 x 400 mm baskets
- ☐ Inserts & supplements
- ☐ High feet kit
- ☐ Reverse osmosis devices
- ☐ OS-140
- ☐ Dosing equipments front AX / UX glass- and undercounter dishwashers
- ☐ Stand for 400x400 mm glasswashers
- ☐ Double rack kits for AX/UX

SPECIFICATIONS

Basket dimensions: 400 mm x 400 mm

Useful height: 300 mm

Cycle duration: 90 / 120 / 150 / 180"

Production baskets / hour: 40 / 30 / 24 / 20

Boiler capacity: 4.5 l

Wash tank capacity: 9 l

Consumption and savings

Water consumption / cycle: 1.9 l
Automatic saving mode in: 25'
Automatic switch-off: 120'

Energi consumption

Energy consumption per cycle: 0,15 kWh
Initial tank filling consumption: 0,39 kWh

Loading__

- ✓ Pump: 250 W / 0.33 Hp
- ✓ Tank: 1200 W
- ✓ Boiler: 2800 W
- ✓ Total loading: 3050 W

External dimensions (W x D x H)

- ✓ Width:490 mm
- ✓ Depth: 540 mm
- ✓ Height: 710 mm

Net weight: 40 kg
Noise level (1m.): <69 dB(A)

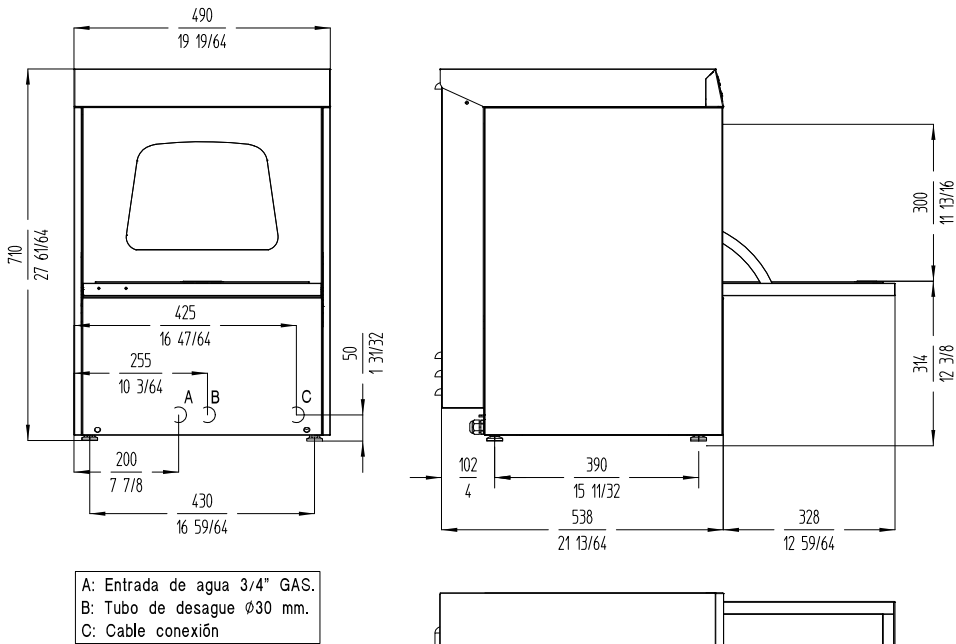
Crated dimensions

525 x 615 x 820 mm
Gross weight: 46 kg

AVAILABLE MODELS

1303130	UX-40S 230/50/1
1303131	UX-40S 220/60/1
1303134	UX-40SB 230/50/1
1303138	UX-40SD 230/50/1
1303142	UX-40SBD 230/50/1
1303143	Glasswasher UX-40SBD 220/60/1

* Ask for special versions availability



GLASSWASHER UX-40C DD

Rack size 400 mm x 400 mm and door clearance 300 mm. Constant temperature rinsing system.



SALES DESCRIPTION

Sani-Control: guaranteed disinfection
Embedded bodywork and easy-grip door: hygienic and ergonomic
Exclusive Hydroblade™ washing arms: maximum effectiveness.
3-stage filtering system.
Double-walled body (partial).

Sani-Control guarantee

- ✓ GUARANTEED DISINFECTION in compliance with standard DIN 10534.
- ✓ THERMAL LOCK function: Ensures that rinsing will be carried out at the ideal temperature to disinfect the dishes.
- ✓ CONSTANT HIGH TEMPERATURE RINSE system for optimal disinfection.
- ✓ The PRESSURE PUMP guarantees effective high-pressure rinsing.

New recessed bodywork

- ✓ Ergonomic design with rounded corners to prevent the accumulation of dirt and facilitate cleaning.
- ✓ Compact tank volume (50% water saving compared to the previous range).
- ✓ Embedded basket guides

Hydroblade™ washing arms

- ✓ Redesigned nozzles for greater washing performance.
- ✓ The “monoblock” design delivers durability and resistance to impacts.
- ✓ 30% savings in water consumption during rinsing compared to the previous range.

3-stage filter system: surface, tank and extraction

- ✓ Keeps the washing water in optimal conditions to maintain constant

washing performance.

- ✓ The surface filters feature an “easy-on” design and can be quickly removed without having to disconnect the washing arms.

“Easy grip” door: new design with integrated door handle

- ✓ The integration of the components provides greater resistance and robustness.
- ✓ Designed to have no corners or areas that are difficult to access: prevents deposits of dirt and facilitates cleaning.
- ✓ Its ergonomic handle provides a perfect grip, even with wet hands.
- ✓ Double-walled door with safety microswitch and high quality seal
- ✓ 30 cm load capacity: high versatility for washing a wide range of glasses and even medium-sized dishes.

Premium warewashing

- ✓ Ultra Xperience: high performance, without complications.
- ✓ Soft start: progressive start-up of the washing pump to protect fragile items.
- ✓ Colour LCD Display: intuitive communication of the machine status by means of messages, colour codes and icons.
- ✓ Dedicated cycles: selection of the ideal washing programme using icons.
- ✓ Adaptable: allows the main parameters of the machine to be adjusted to the needs of each user.
- ✓ TEMPERATURE DISPLAY
- ✓ Wash Plus+ function: increases the intensity of the wash cycle for greater cleaning performance
- ✓ Control panel with IP65 humidity protection.

You will never WASH ALONE

- ✓ Tech-Services: our team of technicians will help you so that your machine is always ready for use.
- ✓ Design Services: tell us what your needs are and we will advise you.
- ✓ 60 years of experience and know-how at your disposal.

INCLUDES

- ✓ Drainage pump with level sensor. Proactive tank water renewal.
- ✓ Detergent Dispenser.
- ✓ 1 glasses basket.
- ✓ 1 mixed basket (plates).
- ✓ 1 small basket for cutlery.

OPTIONAL

- ☐ Manual resin regeneration water softener.

SPECIFICATIONS

Basket dimensions: 400 mm x 400 mm

Useful height: 300 mm

Cycle duration: 90 / 120 / 150 / 180"

Production baskets / hour: 40 / 30 / 24 / 20

Boiler capacity: 4.5 l

Wash tank capacity: 9 l

Consumption and savings

Water consumption / cycle: 1.9 l

Automatic saving mode in: 25'

Automatic switch-off: 120'

Energi consumption

__Energy consumption per cycle: 0,15 kWh

Initial tank filling consumption: 0,39 kWh

Loading__

- ✓ Pump: 250 W / 0.33 Hp

- ✓ Tank: 1200 W

- ✓ Boiler: 2800 W
- ✓ Total loading: 3050 W

External dimensions (W x D x H)

- ✓ Width: 470 mm
- ✓ Depth: 540 mm
- ✓ Height: 710 mm

Net weight: 40 kg

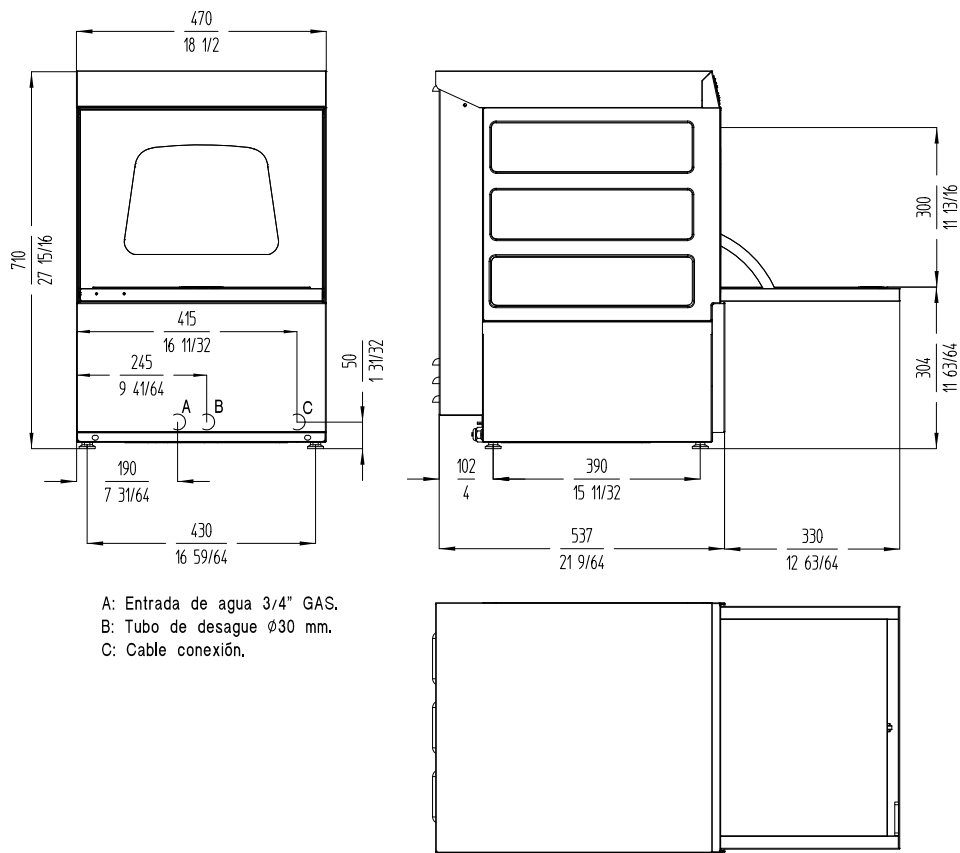
Crated dimensions

525 x 615 x 820 mm
Gross weight: 46 kg

AVAILABLE MODELS

1303123	UX-40BC 230/50/1 DD
---------	---------------------

* Ask for special versions availability



GLASSWASHER UX-40

Rack size 400 mm x 400 mm and door clearance 300 mm.



SALES DESCRIPTION

- ✓ Sani-Control: guaranteed disinfection.
- ✓ Embedded bodywork and easy-grip door: hygienic and ergonomic.
- ✓ Exclusive Hydroblade™ washing arms: maximum effectiveness.
- ✓ 3-stage filtering system.
- ✓ Double-walled body (partial).
- ✓ Cold rinse function.

Sani-Control guarantee

- ✓ GUARANTEED DISINFECTION in compliance with standard DIN 10534.
- ✓ THERMAL LOCK function: ensures that rinsing will be carried out at the ideal temperature to disinfect the dishes.

New recessed bodywork

- ✓ Ergonomic design with rounded corners to prevent the accumulation of dirt and facilitate cleaning.
- ✓ Compact tank volume (50% water saving compared to the previous range).
- ✓ Embedded basket guides.

Hydroblade™ washing arms

- ✓ Redesigned nozzles for greater washing performance.
- ✓ The “monoblock” design delivers durability and resistance to impacts.
- ✓ 30% savings in water consumption during rinsing compared to the previous range.

3-stage filter system: surface, tank and extraction

- ✓ Keeps the washing water in optimal conditions to maintain constant
- ✓ The surface filters feature an “easy-on” design and can be quickly

removed without having to disconnect the washing arms.

“Easy grip” door: new design with integrated door handle

- ✓ The integration of the components provides greater resistance and robustness.
- ✓ Designed to have no corners or areas that are difficult to access: prevents deposits of dirt and facilitates cleaning.
- ✓ Its ergonomic handle provides a perfect grip, even with wet hands.
- ✓ Double-walled door with safety microswitch and high quality seal.
- ✓ 30 cm load capacity: high versatility for washing a wide range of glasses and even medium-sized dishes.

Premium warewashing

- ✓ Ultra Xperience: high performance, without complications.
- ✓ Soft start: progressive start-up of the washing pump to protect fragile items.
- ✓ Colour LCD Display: intuitive communication of the machine status by means of messages, colour codes and icons.
- ✓ Dedicated cycles: selection of the ideal washing programme using icons.
- ✓ Adaptable: allows the main parameters of the machine to be adjusted to the needs of each user.
- ✓ TEMPERATURE DISPLAY.
- ✓ Wash Plus+ function: increases the intensity of the wash cycle for greater cleaning performance
- ✓ Control panel with IP65 humidity protection.

You will never WASH ALONE

- ✓ Tech Services: our team of technicians will help you so that your machine is always ready for use.
- ✓ Design Services: tell us what your needs are and we will advise you.
- ✓ 60 years of experience and know-how at your disposal.

INCLUDES

- ✓ Rinse aid pump.
- ✓ 1 mixed basket (plates).
- ✓ 1 glasses basket.
- ✓ 1 small basket for cutlery.

OPTIONAL

- ☐ Detergent dosing kit.
- ☐ Drainage pump with level sensor. Proactive tank water renewal.
- ☐ Manual resin regeneration water softener.
- ☐ Double-level accessory for washing two baskets at the same time.

ACCESSORIES

- ☐ Manual water softeners
- ☐ Automatic water softeners
- ☐ 400 x 400 mm baskets
- ☐ Inserts & supplements
- ☐ High feet kit
- ☐ Reverse osmosis devices OS-140
- ☐ Dosing equipments front AX / UX glass- and undercounter dishwashers
- ☐ Double rack kits for AX/UX

SPECIFICATIONS

Basket dimensions: 400 mm x 400 mm

Useful height: 300 mm

Cycle duration: 90 / 120 / 150 / 180"

Production baskets / hour: 40 / 30 / 24 / 20

Boiler capacity: 4.5 l

Wash tank capacity: 9 l

Consumption and savings

Water consumption/cycle: 1.9 l
Automatic saving mode in: 25'
Automatic switch-off: 120'

Energy consumption

Water consumption/cycle (kWh): 0,15 kWh
Tank filling consumption (kWh): 0,39 kWh

Loading

- ✓ Pump: 250 W / 0.33 Hp
- ✓ Tank: 1200 W
- ✓ Boiler: 2800 W
- ✓ Total loading: 3050 W

Electrical connection: .

External dimensions (W x D x H)

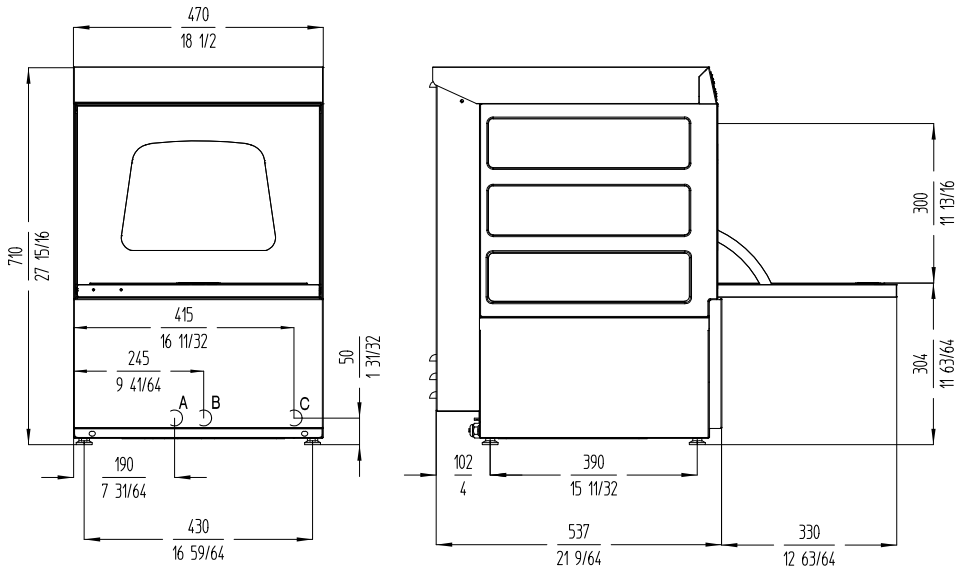
- ✓ Width: 470 mm

- ✓ Depth: 540 mm
 - ✓ Height: 710 mm
- Noise level (1m.): <69 dB(A)
- Crated dimensions
525 x 615 x 820 mm

AVAILABLE MODELS

1303100	UX-40 230/50/1
1303101	UX-40 220/60/1
1303105	UX-40B 230/50/1
1303106	UX-40B 220/60/1
1303109	UX-40D 230/50/1
1303113	UX-40BD 230/50/1

* Ask for special versions availability



A: Entrada de agua 3/4" GAS.
B: Tubo de desague Ø30 mm.
C: Cable conexión.

DISHWASHER AX-50

Rack size 500 mm x 500 mm and door clearance 380 mm.



“Easy grip” door: new design with integrated door handle

- ✓ The integration of the components provides greater resistance and robustness.
- ✓ Designed to have no corners or areas that are difficult to access: prevents deposits of dirt and facilitates cleaning.
- ✓ Its ergonomic handle provides a perfect grip, even with wet hands.
- ✓ Double-walled door with safety microswitch and high quality seal.
- ✓ 38 cm loading capacity: high versatility for washing a wide range of items: dishes, Euronorm trays, GN 1/1 tubs and pizza plates diam 39 cm.

Warewashing, made simple

- ✓ Active Xperience: simple and intuitive use
- ✓ Dedicated cycles: selection of the ideal washing programme using icons.
- ✓ Electronic control panel with IP65 humidity protection.

You will never WASH ALONE

- ✓ Tech Services: our team of technicians will help you so that your machine is always ready for use.
- ✓ Design Services: tell us what your needs are and we will advise you.
- ✓ 60 years of experience and know-how at your disposal.

SALES DESCRIPTION

- ✓ Sani-Control: guaranteed disinfection.
- ✓ Embedded bodywork and easy-grip door: hygienic and ergonomic.
- ✓ Exclusive Hydroblade™ washing arms: maximum effectiveness.
- ✓ 3-stage filtering system.
- ✓ Double-walled body (partial).

Sani-Control guarantee

- ✓ GUARANTEED DISINFECTION in compliance with standard DIN 10534.
- ✓ THERMAL LOCK function: ensures that rinsing will be carried out at the ideal temperature to disinfect the dishes.

New recessed bodywork

- ✓ Ergonomic design with rounded corners to prevent the accumulation of dirt and facilitate cleaning.
- ✓ Compact tank volume (50% water saving compared to the previous range).
- ✓ Embedded basket guides.

Hydroblade™ washing arms

- ✓ Redesigned nozzles for greater washing performance.
- ✓ The “monoblock” design delivers durability and resistance to impacts.
- ✓ 30% savings in water consumption during rinsing compared to the previous range.

3-stage filter system: surface, tank and extraction

- ✓ Keeps the washing water in optimal conditions to maintain constant washing performance.
- ✓ The surface filters feature an “easy-on” design and can be quickly removed without having to disconnect the washing arms.

INCLUDES

- ✓ Rinse aid pump.
- ✓ 1 glasses basket.
- ✓ 1 mixed basket (plates).
- ✓ 1 small basket for cutlery.

OPTIONAL

- ☐ Detergent dosing kit.
- ☐ Overflow drainage pump. Tank water renewal by the principle of density.
- ☐ Double-level accessory for washing two baskets at the same time.

ACCESSORIES

- ☐ Manual water softeners
- ☐ Automatic water softeners
- ☐ 500 x 500 mm baskets
- ☐ Inserts & supplements
- ☐ High feet kit
- ☐ Reverse osmosis devices OS-140
- ☐ Dosing equipments front AX / UX glass- and undercounter dishwashers
- ☐ Double rack kits for AX/UX

SPECIFICATIONS

Basket dimensions: 500 mm x 500 mm

Useful height: 380 mm

Cycle duration: 120 / 150 / 210"

Production baskets / hour: 30 / 24 / 17

Wash temperature: 55°C - 65°C

Rinse temperature: 75°C - 85°C

- ✓ Boiler capacity: 4.5 l
- ✓ Wash tank capacity: 14 l
- ✓ Water consumption/cycle: 2.7 l

Energy consumption

Water consumption/cycle (kWh): 0,21 kWh

Tank filling consumption (kWh): 0,6 kWh

Loading__

DISHWASHER UX-50C ISO

Rack size 500x500mm and door clearance 380 mm. Double-skinned construction.



SALES DESCRIPTION

Sani-Control: guaranteed disinfection
Embedded bodywork and easy-grip door: hygienic and ergonomic
Double-walled body: insulation and energy efficiency
Exclusive Hydroblade™ washing arms: maximum effectiveness.
3-stage filtering system.

Sani-Control guarantee

- ✓ GUARANTEED DISINFECTION in compliance with standard DIN 10534.
- ✓ THERMAL LOCK function: Ensures that rinsing will be carried out at the ideal temperature to disinfect the dishes.
- ✓ CONSTANT HIGH TEMPERATURE RINSE system for optimal disinfection.
- ✓ The PRESSURE PUMP guarantees effective high-pressure rinsing
- ✓ WRAS certified.

New recessed bodywork

- ✓ Ergonomic design with rounded corners to prevent the accumulation of dirt and facilitate cleaning.
- ✓ Compact tank volume (50% water saving compared to the previous range).
- ✓ Embedded basket guides

Double-Walled (Ultra ISO)

- ✓ Double-Walled Structure: thermo-acoustic insulation to attenuate the sound level and improve energy efficiency

Hydroblade™ washing arms

- ✓ Redesigned nozzles for greater washing performance.
- ✓ The “monoblock” design delivers durability and resistance to impacts.
- ✓ 30% savings in water consumption during rinsing compared to the previous range.

3-stage filter system: surface, tank and extraction

- ✓ Keeps the washing water in optimal conditions to maintain constant washing performance.
- ✓ The surface filters feature an “easy-on” design and can be quickly removed without having to disconnect the washing arms.

“Easy grip” door: new design with integrated door handle

- ✓ The integration of the components provides greater resistance and robustness.
- ✓ Designed to have no corners or areas that are difficult to access: prevents deposits of dirt and facilitates cleaning.
- ✓ Its ergonomic handle provides a perfect grip, even with wet hands.
- ✓ Double-walled door with safety microswitch and high quality seal
- ✓ 38 cm loading capacity: high versatility for washing a wide range of items: dishes, Euronorm trays, GN 1/1 tubs and pizza plates diam 39.

Premium warewashing

- ✓ Ultra Xperience: high performance, without complications.
- ✓ Soft start: progressive start-up of the washing pump to protect fragile items.
- ✓ Colour LCD Display: intuitive communication of the machine status by means of messages, colour codes and icons.
- ✓ Dedicated cycles: selection of the ideal washing programme using icons.
- ✓ Adaptable: allows the main parameters of the machine to be adjusted to the needs of each user.
- ✓ TEMPERATURE DISPLAY
- ✓ Wash Plus+ function: increases the intensity of the wash cycle for greater cleaning performance.
- ✓ Control panel with IP65 humidity protection.

You will never WASH ALONE

- ✓ Tech-Services: our team of technicians will help you so that your machine is always ready for use.
- ✓ Design Services: tell us what your needs are and we will advise you.
- ✓ 60 years of experience and know-how at your disposal.

INCLUDES

- ✓ 1 glasses basket.
- ✓ 1 mixed basket (plates).
- ✓ 1 small basket for cutlery.
- ✓ Drainage pump with level sensor. Proactive tank water renewal.

OPTIONAL

- ☐ Detergent dosing kit.
- ☐ Automatic resin regeneration water softener with salt detector.
- ☐ Double-level accessory for washing two baskets at the same time.

ACCESSORIES

- ☐ Manual water softeners
- ☐ Automatic water softeners
- ☐ 500 x 500 mm baskets
- ☐ Inserts & supplements
- ☐ High feet kit
- ☐ Reverse osmosis devices
- OS-140
- ☐ Dosing equipments front AX / UX glass- and undercounter dishwashers
- ☐ Stands for dishwashers 500x500mm
- ☐ Double rack kits for AX/UX

SPECIFICATIONS

Basket dimensions: 500 mm x 500 mm
Useful height: 380 mm

Cycle duration: 90/110/120/180/240”
Production baskets / hour: 40/33/30/20/15

Wash temperature: 55°C - 65°C
Rinse temperature: 65°C - 87°C
Wash tank capacity: 14 l

Consumption and savings

Automatic saving mode in: 25'
Automatic switch-off: 120'

Loading

Pump: 750 W / 1 Hp

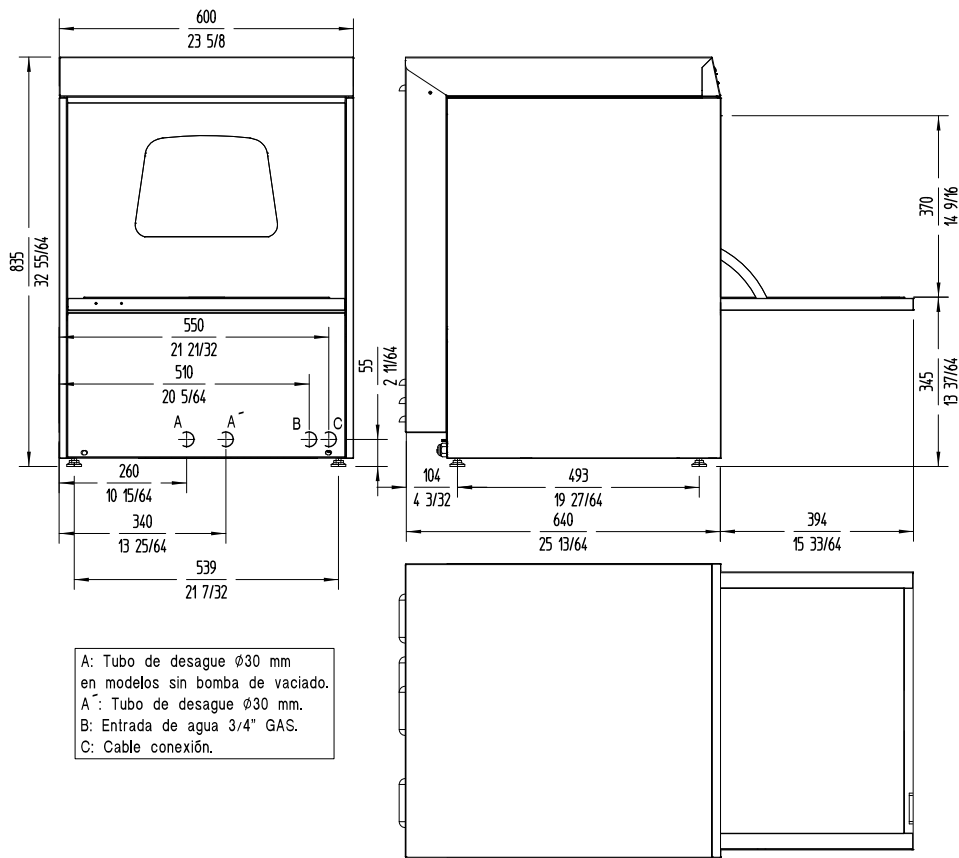
External dimensions (W x D x H)

Net weight: 72 kg

AVAILABLE MODELS

-----	-
-------	---

* Ask for special versions availability



DISHWASHER UX-50 ISO

Rack size 500 mm x 500 mm and door clearance 380 mm. Double-skinned construction.



SALES DESCRIPTION

Sani-Control: guaranteed disinfection
Embedded bodywork and easy-grip door: hygienic and ergonomic
Double-walled body: insulation and energy efficiency
Exclusive Hydroblade™ washing arms: maximum effectiveness.
3-stage filtering system.

Sani-Control guarantee

- ✓ GUARANTEED DISINFECTION in compliance with standard DIN 10534.
- ✓ THERMAL LOCK function: Ensures that rinsing will be carried out at the ideal temperature to disinfect the dishes.

New recessed bodywork

- ✓ Ergonomic design with rounded corners to prevent the accumulation of dirt and facilitate cleaning.
- ✓ Compact tank volume (50% water saving compared to the previous range).
- ✓ Embedded basket guides

Double-Walled (Ultra ISO)

- ✓ Double-Walled Structure: thermo-acoustic insulation to attenuate the sound level and improve energy efficiency

Hydroblade™ washing arms

- ✓ Redesigned nozzles for greater washing performance.
- ✓ The “monoblock” design delivers durability and resistance to impacts.
- ✓ 30% savings in water consumption during rinsing compared to the previous range.

3-stage filter system: surface, tank and extraction

- ✓ Keeps the washing water in optimal conditions to maintain constant washing performance.

- ✓ The surface filters feature an “easy-on” design and can be quickly removed without having to disconnect the washing arms.

“Easy grip” door: new design with integrated door handle

- ✓ The integration of the components provides greater resistance and robustness.
- ✓ Designed to have no corners or areas that are difficult to access: prevents deposits of dirt and facilitates cleaning.
- ✓ Its ergonomic handle provides a perfect grip, even with wet hands.
- ✓ Double-walled door with safety microswitch and high quality seal
- ✓ 38 cm loading capacity: high versatility for washing a wide range of items: dishes, Euronorm trays, GN 1/1 tubs and pizza plates diam 39.

Premium warewashing

- ✓ Ultra Xperience: high performance, without complications.
- ✓ Soft start: progressive start-up of the washing pump to protect fragile items.
- ✓ Colour LCD Display: intuitive communication of the machine status by means of messages, colour codes and icons.
- ✓ Dedicated cycles: selection of the ideal washing programme using icons.
- ✓ Adaptable: allows the main parameters of the machine to be adjusted to the needs of each user.
- ✓ TEMPERATURE DISPLAY
- ✓ Wash Plus+ function: increases the intensity of the wash cycle for greater cleaning performance
- ✓ Control panel with IP65 humidity protection.

You will never WASH ALONE

- ✓ Tech-Services: our team of technicians will help you so that your machine is always ready for use.
- ✓ Design Services: tell us what your needs are and we will advise you.
- ✓ 60 years of experience and know-how at your disposal.

INCLUDES

- ✓ Rinse aid pump.
- ✓ 1 mixed basket (plates).
- ✓ 1 glasses basket.
- ✓ 1 small basket for cutlery.

OPTIONAL

- ☐ Detergent dosing kit.
- ☐ Manual resin regeneration water softener.
- ☐ Drainage pump with level sensor. Proactive tank water renewal.
- ☐ Double-level accessory for washing two baskets at the same time.

ACCESSORIES

- ☐ Manual water softeners OS-140
- ☐ Automatic water softeners
- ☐ Dosing equipments front AX / UX glass- and undercounter dishwashers
- ☐ 500 x 500 mm baskets
- ☐ Stands for dishwashers 500x500mm
- ☐ Inserts & supplements
- ☐ Double rack kits for AX/UX
- ☐ High feet kit
- ☐ Reverse osmosis devices

SPECIFICATIONS

Basket dimensions: 500 mm x 500 mm

Useful height: 380 mm

Cycle duration: 90/110/120/180/240"

Production baskets / hour: 40/33/30/20/15

Wash temperature: 55°C - 65°C

Rinse temperature: 65°C - 87°C

Boiler capacity: 8 l
Wash tank capacity: 14 l

Consumption and savings

Water consumption/cycle: 2.5 l
Automatic saving mode in: 25'
Automatic switch-off: 120'

Loading

Pump: 750 W / 1 Hp
Tank: 1800 W
Boiler: 5000 W
Total loading: 5750 W

External dimensions (W x D x H)

- ✓ Width: 600 mm
 - ✓ Depth: 640 mm
 - ✓ Height: 835 mm
- Net weight: 64 kg
Noise level (1m.): <69 dB(A)

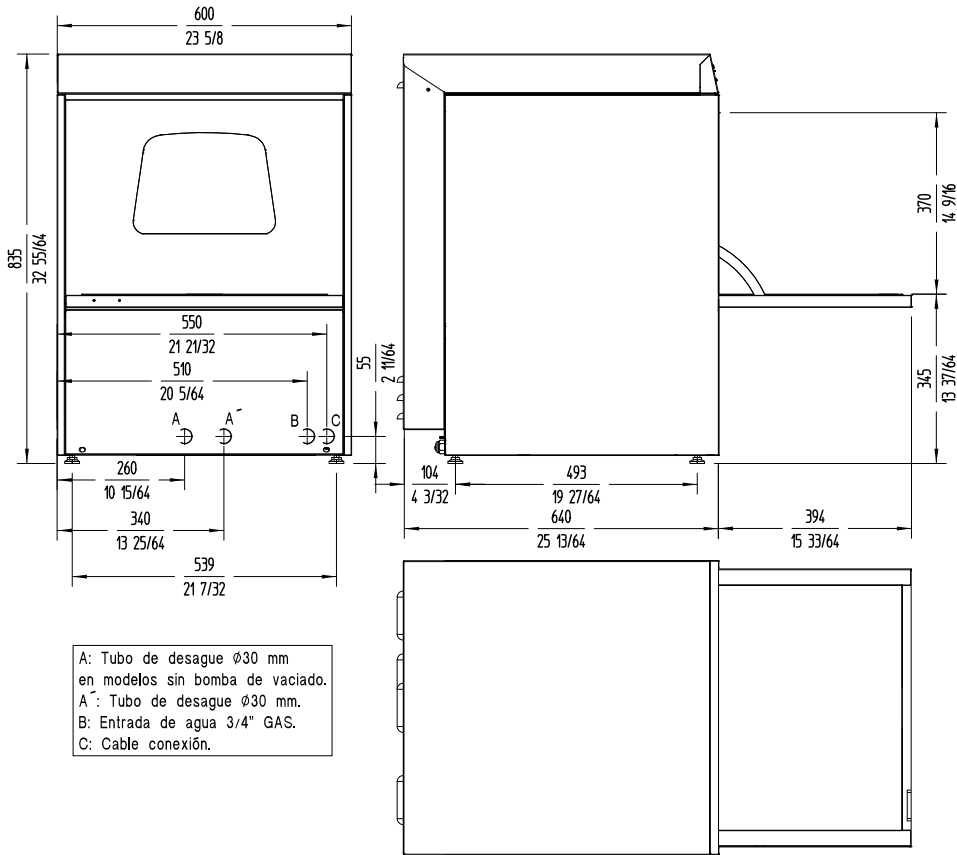
Crated dimensions

640 x 695 x 960 mm
Gross weight: 71 kg

AVAILABLE MODELS

1303260	UX-50S 400/50/3N
1303264	UX-50SB 400/50/3N
1303268	UX-50SD 400/50/3N
1303272	UX-50SBD 400/50/3N
1303261	UX-50S 220/60/1
1303265	UX-50SB 220/60/1
1303269	UX-50SD 220/60/1
1303273	UX-50SBD 220/60/1

* Ask for special versions availability



DISHWASHER UX-50C

Rack size 500 mm x 500 mm and door clearance 380 mm. Constant temperature rinsing system.



SALES DESCRIPTION

Sani-Control: guaranteed disinfection
Embedded bodywork and easy-grip door: hygienic and ergonomic
Exclusive Hydroblade™ washing arms: maximum effectiveness.
3-stage filtering system.
Double-walled body (partial).

Sani-Control guarantee

- ✓ GUARANTEED DISINFECTION in compliance with standard DIN 10534.
- ✓ THERMAL LOCK function: Ensures that rinsing will be carried out at the ideal temperature to disinfect the dishes.
- ✓ CONSTANT HIGH TEMPERATURE RINSE system for optimal disinfection.
- ✓ The PRESSURE PUMP guarantees effective high-pressure rinsing
- ✓ WRAS certified.

New recessed bodywork

- ✓ Ergonomic design with rounded corners to prevent the accumulation of dirt and facilitate cleaning.
- ✓ Compact tank volume (50% water saving compared to the previous range).
- ✓ Embedded basket guides

Hydroblade™ washing arms

- ✓ Redesigned nozzles for greater washing performance.
- ✓ The “monoblock” design delivers durability and resistance to impacts.
- ✓ 30% savings in water consumption during rinsing compared to the previous range.

3-stage filter system: surface, tank and extraction

- ✓ Keeps the washing water in optimal conditions to maintain constant washing performance.

- ✓ The surface filters feature an “easy-on” design and can be quickly removed without having to disconnect the washing arms.

“Easy grip” door: new design with integrated door handle

- ✓ The integration of the components provides greater resistance and robustness.
- ✓ Designed to have no corners or areas that are difficult to access: prevents deposits of dirt and facilitates cleaning.
- ✓ Its ergonomic handle provides a perfect grip, even with wet hands.
- ✓ Double-walled door with safety microswitch and high quality seal
- ✓ 38 cm loading capacity: high versatility for washing a wide range of items: dishes, Euronorm trays, GN 1/1 tubs and pizza plates diam 39

Premium warewashing

- ✓ Ultra Xperience: high performance, without complications.
- ✓ Soft start: progressive start-up of the washing pump to protect fragile items.
- ✓ Colour LCD Display: intuitive communication of the machine status by means of messages, colour codes and icons.
- ✓ Dedicated cycles: selection of the ideal washing programme using icons.
- ✓ Adaptable: allows the main parameters of the machine to be adjusted to the needs of each user.
- ✓ TEMPERATURE DISPLAY
- ✓ Wash Plus+ function: increases the intensity of the wash cycle for greater cleaning performance
- ✓ Control panel with IP65 humidity protection.

You will never WASH ALONE

- ✓ Tech-Services: our team of technicians will help you so that your machine is always ready for use.
- ✓ Design Services: tell us what your needs are and we will advise you.
- ✓ 60 years of experience and know-how at your disposal.

INCLUDES

- ✓ 1 glasses basket.
- ✓ 1 mixed basket (plates).
- ✓ 1 small basket for cutlery.
- ✓ Drainage pump with level sensor. Proactive tank water renewal.

OPTIONAL

- ☐ Detergent dosing kit.
- ☐ Automatic resin regeneration water softener with salt detector.
- ☐ Double-level accessory for washing two baskets at the same time.

ACCESSORIES

- ☐ Manual water softeners OS-140
- ☐ Automatic water softeners
- ☐ 500 x 500 mm baskets
- ☐ Inserts & supplements
- ☐ High feet kit
- ☐ Reverse osmosis devices
- ☐ Dosing equipments front AX / UX glass- and undercounter dishwashers
- ☐ Stands for dishwashers 500x500mm
- ☐ Double rack kits for AX/UX

SPECIFICATIONS

Basket dimensions: 500 mm x 500 mm

Useful height: 380 mm

Cycle duration: 90/110/120/180/240”

Production baskets / hour: 40/33/30/20

Wash temperature: 55°C - 65°C

Rinse temperature: 65°C - 87°C

Boiler capacity: 8 l

Wash tank capacity: 14 l

Consumption and savings

Water consumption/cycle: 2.5 l
Automatic saving mode in: 25'
Automatic switch-off: 120'

Loading

Pump: 750 W / 1 Hp
Tank: 1800 W
Total loading: 5750 W

External dimensions (W x D x H)

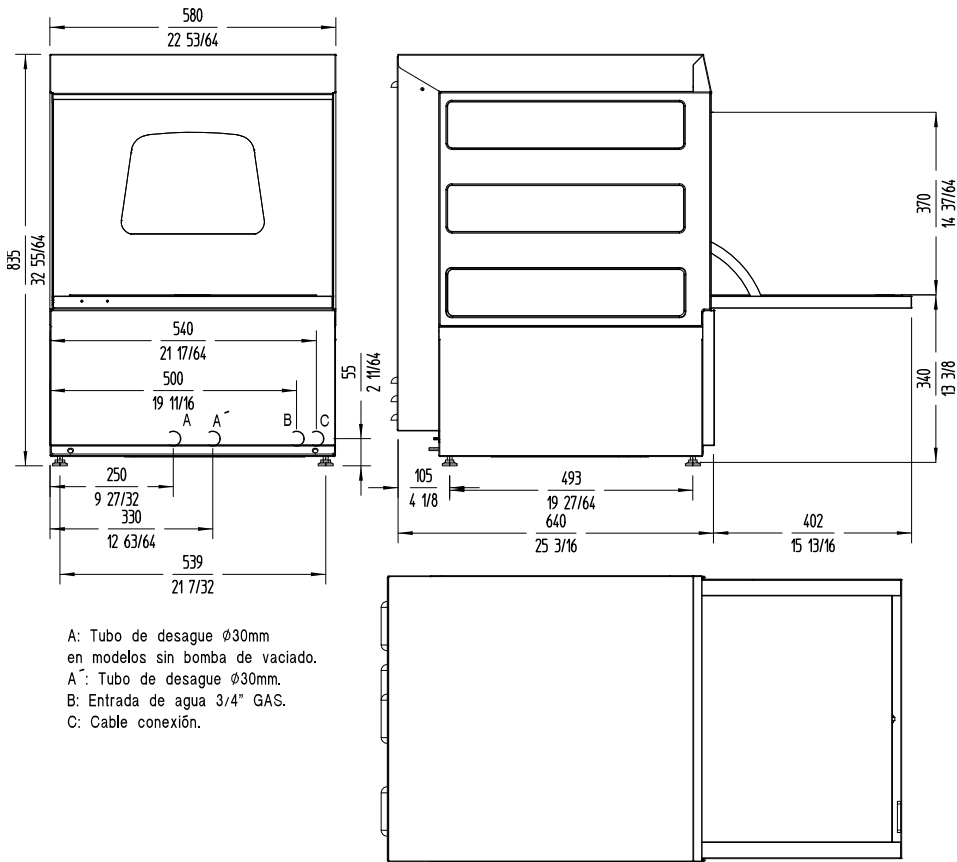
✓ Width: 580 mm

- ✓ Depth: 635 mm
- ✓ Height: 835 mm

Crated dimensions
640 x 695 x 960 mm

AVAILABLE MODELS

* Ask for special versions availability



DISHWASHER UX-50

Rack size 500 mm x 500 mm and door clearance 380 mm. Multi-power version.



“Easy grip” door: new design with integrated door handle

- ✓ The integration of the components provides greater resistance and robustness.
- ✓ Designed to have no corners or areas that are difficult to access: prevents deposits of dirt and facilitates cleaning.
- ✓ Its ergonomic handle provides a perfect grip, even with wet hands.
- ✓ Double-walled door with safety microswitch and high quality seal.
- ✓ 38 cm loading capacity: high versatility for washing a wide range of items: dishes, Euronorm trays, GN 1/1 tubs and pizza plates diam 39 cm.

Premium warewashing

- ✓ Ultra Xperience: high performance, without complications.
- ✓ Soft start: progressive start-up of the washing pump to protect fragile items.
- ✓ Colour LCD Display: intuitive communication of the machine status by means of messages, colour codes and icons.
- ✓ Dedicated cycles: selection of the ideal washing programme using icons.
- ✓ Adaptable: allows the main parameters of the machine to be adjusted to the needs of each user.
- ✓ TEMPERATURE DISPLAY.
- ✓ Wash Plus+ function: increases the intensity of the wash cycle for greater cleaning performance
- ✓ Control panel with IP65 humidity protection.

SALES DESCRIPTION

- ✓ Sani-Control: guaranteed disinfection.
- ✓ Embedded bodywork and easy-grip door: hygienic and ergonomic.
- ✓ Exclusive Hydroblade™ washing arms: maximum effectiveness.
- ✓ 3-stage filtering system.
- ✓ Double-walled body (partial).

Sani-Control guarantee

- ✓ GUARANTEED DISINFECTION in compliance with standard DIN 10534.
- ✓ THERMAL LOCK function: Ensures that rinsing will be carried out at the ideal temperature to disinfect the dishes.

New recessed bodywork

- ✓ Ergonomic design with rounded corners to prevent the accumulation of dirt and facilitate cleaning.
- ✓ Compact tank volume (50% water saving compared to the previous range).
- ✓ Embedded basket guides.

Hydroblade™ washing arms

- ✓ Redesigned nozzles for greater washing performance.
- ✓ The “monoblock” design delivers durability and resistance to impacts.
- ✓ 30% savings in water consumption during rinsing compared to the previous range.

3-stage filter system: surface, tank and extraction

- ✓ Keeps the washing water in optimal conditions to maintain constant washing performance.
- ✓ The surface filters feature an “easy-on” design and can be quickly removed without having to disconnect the washing arms.

You will never WASH ALONE

- ✓ Tech Services: our team of technicians will help you so that your machine is always ready for use.
- ✓ Design Services: tell us what your needs are and we will advise you.
- ✓ 60 years of experience and know-how at your disposal.

INCLUDES

- ✓ Rinse aid pump.
- ✓ 1 mixed basket (plates).
- ✓ 1 glasses basket.
- ✓ 1 small basket for cutlery.

OPTIONAL

- ☐ Detergent dosing kit.
- ☐ Manual resin regeneration water softener.
- ☐ Drainage pump with level sensor. Proactive tank water renewal.
- ☐ Double-level accessory for washing two baskets at the same time.

ACCESSORIES

- ☐ Manual water softeners
- ☐ Automatic water softeners
- ☐ 500 x 500 mm baskets
- ☐ Inserts & supplements
- ☐ High feet kit
- ☐ Reverse osmosis devices OS-140
- ☐ Dosing equipments front AX / UX glass- and undercounter dishwashers
- ☐ Double rack kits for AX/UX

SPECIFICATIONS

Basket dimensions: 500 mm x 500 mm

Useful height: 380 mm

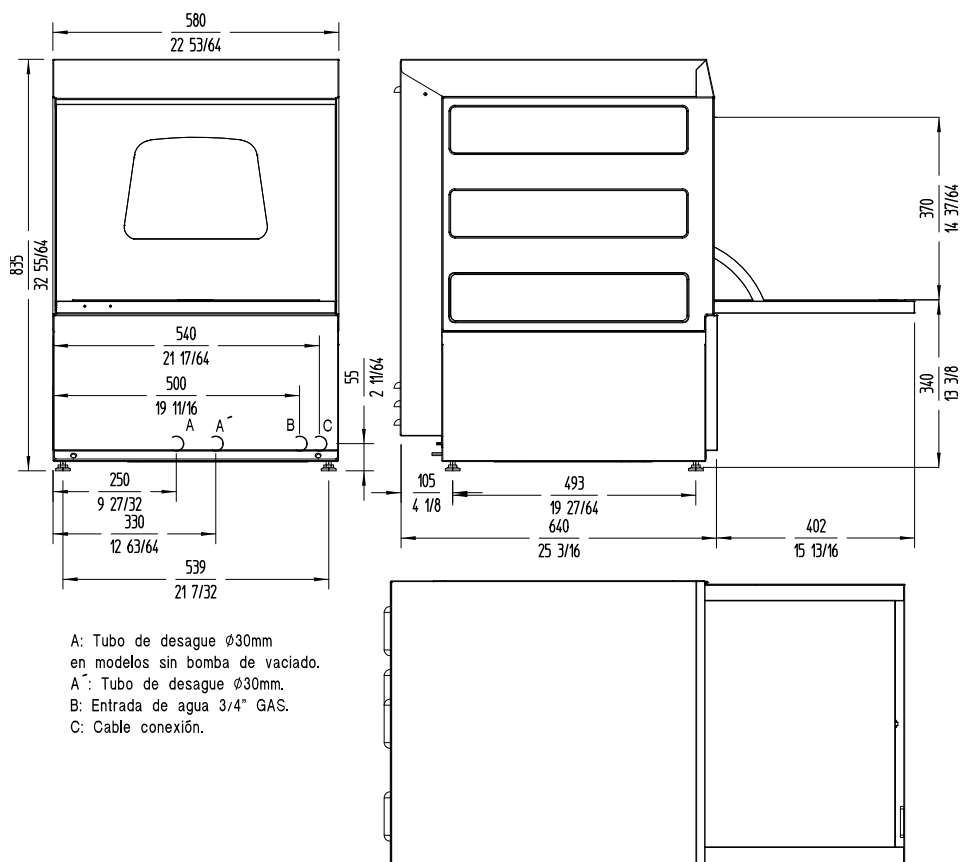
Cycle duration: 90 / 110 / 120 / 180 / 240”

Production baskets / hour: 40 / 33 / 30 / 20 / 15

Wash temperature: 40°C - 65°C

Rinse temperature: 65°C - 87°C

Rack size 500 mm x 500 mm and door clearance 380 mm. Multi-power version.



DISHWASHER UX-50 LITE

Rack size 500 mm x 500 mm and door clearance 380 mm.



SALES DESCRIPTION

- ✓ Sani-Control: guaranteed disinfection.
- ✓ Embedded bodywork and easy-grip door: hygienic and ergonomic.
- ✓ Exclusive Hydroblade™ washing arms: maximum effectiveness.
- ✓ 3-stage filtering system.
- ✓ Double-walled body (partial).

Sani-Control guarantee

- ✓ GUARANTEED DISINFECTION in compliance with standard DIN 10534.
- ✓ THERMAL LOCK function: ensures that rinsing will be carried out at the ideal temperature to disinfect the dishes.

New recessed bodywork

- ✓ Ergonomic design with rounded corners to prevent the accumulation of dirt and facilitate cleaning.
- ✓ Compact tank volume (50% water saving compared to the previous range).
- ✓ Embedded basket guides.

Hydroblade™ washing arms

- ✓ Redesigned nozzles for greater washing performance.
- ✓ The “monoblock” design delivers durability and resistance to impacts.
- ✓ 30% savings in water consumption during rinsing compared to the previous range.

3-stage filter system: surface, tank and extraction

- ✓ Keeps the washing water in optimal conditions to maintain constant washing performance.
- ✓ The surface filters feature an “easy-on” design and can be quickly removed without having to disconnect the washing arms.

“Easy grip” door: new design with integrated door handle

- ✓ The integration of the components provides greater resistance and robustness.
- ✓ Designed to have no corners or areas that are difficult to access: prevents deposits of dirt and facilitates cleaning.
- ✓ Its ergonomic handle provides a perfect grip, even with wet hands.
- ✓ Double-walled door with safety microswitch and high quality seal.
- ✓ 38 cm loading capacity: high versatility for washing a wide range of items: dishes, Euronorm trays, GN 1/1 tubs and pizza plates diam 39 cm.

Premium warewashing

- ✓ Ultra Xperience: high performance, without complications.
- ✓ Soft start: progressive start-up of the washing pump to protect fragile items.
- ✓ Colour LCD Display: intuitive communication of the machine status by means of messages, colour codes and icons.
- ✓ Dedicated cycles: selection of the ideal washing programme using icons.
- ✓ Adaptable: allows the main parameters of the machine to be adjusted to the needs of each user.
- ✓ TEMPERATURE DISPLAY.
- ✓ Wash Plus+ function: increases the intensity of the wash cycle for greater cleaning performance.
- ✓ Control panel with IP65 humidity protection.

You will never WASH ALONE

- ✓ Tech Services: our team of technicians will help you so that your machine is always ready for use.
- ✓ Design Services: tell us what your needs are and we will advise you.
- ✓ 60 years of experience and know-how at your disposal.

INCLUDES

- ✓ Rinse aid pump.
- ✓ 1 mixed basket (plates).
- ✓ 1 glasses basket.
- ✓ 1 small basket for cutlery.

OPTIONAL

- ☐ Detergent dosing kit.
- ☐ Drainage pump with level sensor. Proactive tank water renewal.
- ☐ Double-level accessory for washing two baskets at the same time.

ACCESSORIES

- ☐ Manual water softeners
- ☐ Automatic water softeners
- ☐ 500 x 500 mm baskets
- ☐ Inserts & supplements
- ☐ High feet kit
- ☐ Reverse osmosis devices OS-140
- ☐ Dosing equipments front AX / UX glass- and undercounter dishwashers
- ☐ Double rack kits for AX/UX

SPECIFICATIONS

Basket dimensions: 500 mm x 500 mm
Useful height: 380 mm

Cycle duration: 90 / 110 / 120 / 180 / 240”
Production baskets / hour: 40 / 33 / 30 / 20 / 15

Wash temperature: 55°C - 65°C
Rinse temperature: 70°C - 87°C

Boiler capacity: 8 l
Wash tank capacity: 14 l

Consumption and savings

Water consumption/cycle: 2.5 l
Automatic saving mode in: 25'
Automatic switch-off: 120'

Energy consumption

__Water consumption/cycle (kWh): 0,19 kWh
Tank filling consumption (kWh): 0,6 kWh

Loading__

Pump: 750 W / 1 Hp
Tank: 1800 W
Boiler: 3000 W
Total loading: 3750 W

Electrical connection: .

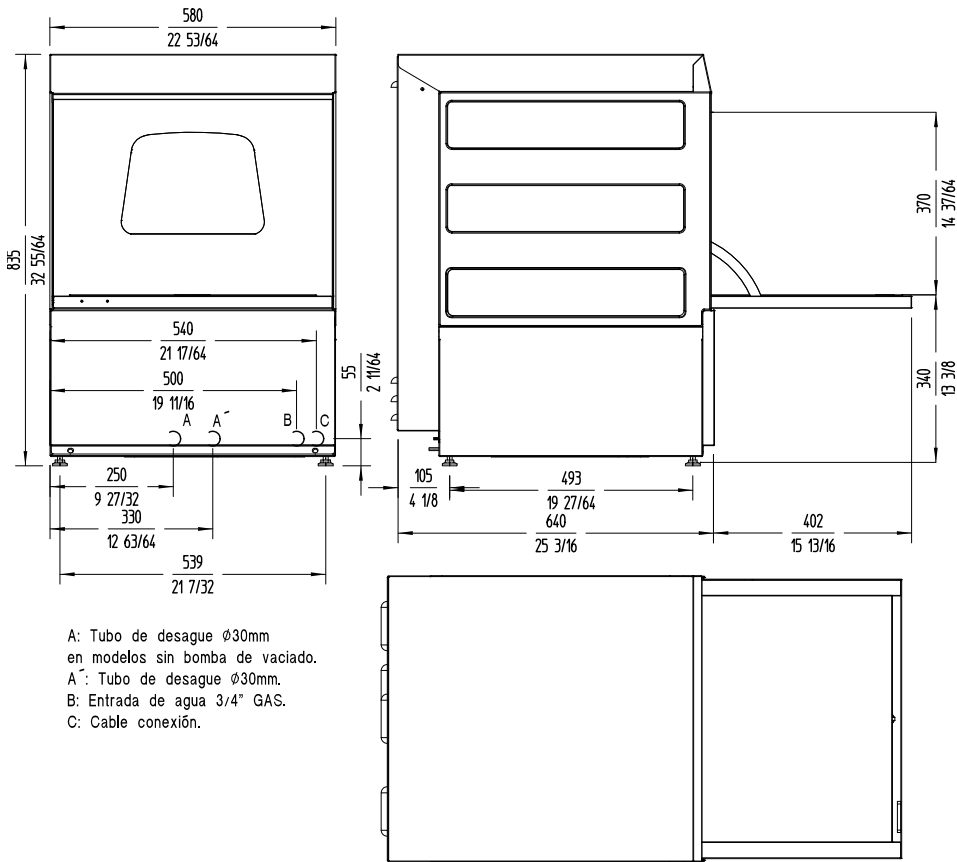
External dimensions (W x D x H)

- ✓ Width:580 mm
 - ✓ Depth: 635 mm
 - ✓ Height: 835 mm
- Noise level (1m.): <69 dB(A)
- Crated dimensions
640 x 695 x 960 mm

AVAILABLE MODELS

1303215	UX-50L 230/50/1
1303218	UX-50LB 230/50/1
1303217	UX-50L 220/60/1
1302387	UX-50L 220/60/1 M

* Ask for special versions availability



GLASSWASHER GP-50

Rack size 500 mm x 500 mm and door clearance 260 mm.



SALES DESCRIPTION

Sani-Control guarantee

- ✓ GUARANTEED DISINFECTION in compliance with standard DIN 10534.
- ✓ THERMAL LOCK function: ensures that rinsing will be carried out at the ideal temperature to disinfect the dishes.
- ✓ Upper and lower washing.
- ✓ Construction in stainless steel AISI 304 2B.
- ✓ Interior with rounded finishes to prevent the accumulation of dirt.

Double filter system

- ✓ Maximum protection of the washing pump.

Double-walled door

- ✓ Double-walled door, safety microswitch and high quality seal: perfectly soundproof and watertight.

Warewashing, made simple

- ✓ GP Xperience: simple and intuitive use.
- ✓ Dedicated cycles: selection of the ideal washing programme using icons.
- ✓ Electronic control panel with IP65 humidity protection.
- ✓ 100% tested.

Tech-friendly

- ✓ Tool-free extraction of diffusers and filters for maintenance and cleaning.
- ✓ Easy access to components for repair.

INCLUDES

- ✓ Rinse aid pump.
- ✓ 1 mixed basket (plates).
- ✓ 1 glasses basket.
- ✓ 1 small basket for cutlery.

OPTIONAL

- ☐ Detergent dosing kit.
 - ☐ Overflow drainage pump. Tank
- water renewal by the principle of density.

ACCESSORIES

- ☐ Manual water softeners
- ☐ Automatic water softeners
- ☐ 500 x 500 mm baskets
- ☐ Inserts & supplements
- ☐ High feet kit
- ☐ Reverse osmosis devices OS-140
- ☐ Detergent dosing equipment for GP glasswashers

SPECIFICATIONS

Basket dimensions: 500 mm x 500 mm
Useful height: 260 mm

Cycle duration: 120 / 150"
Production baskets / hour: 30 / 24

Boiler capacity: 4.5 l
Wash tank capacity: 23 l
Water consumption/cycle: 2.7 l

Loading

- ✓ Pump: 550 W / 0.75 Hp
- ✓ Tank: 1800 W
- ✓ Boiler: 2800 W
- ✓ Total loading: 3350 W

Electrical connection: .

External dimensions (W x D x H)

- ✓ Width: 580 mm
- ✓ Depth: 630 mm
- ✓ Height: 710 mm

Noise level (1m.): <70 dB(A)

Crated dimensions
640 x 69 x 960 mm

AVAILABLE MODELS

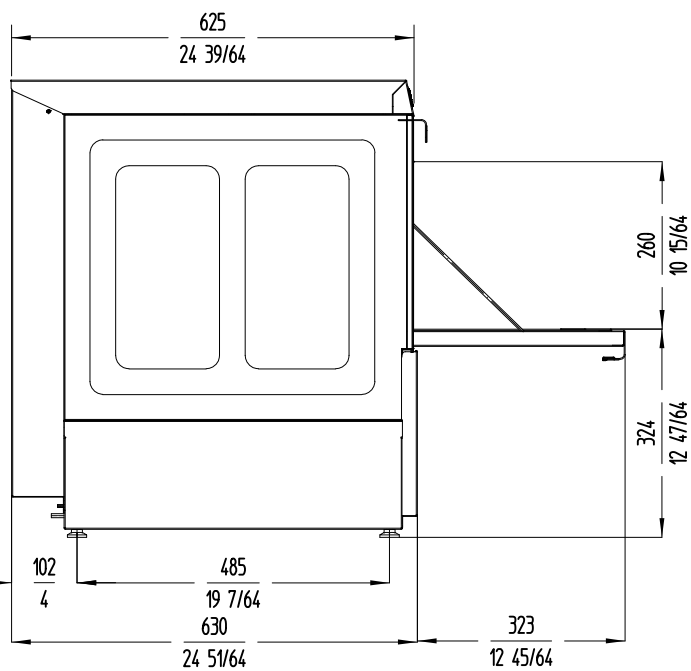
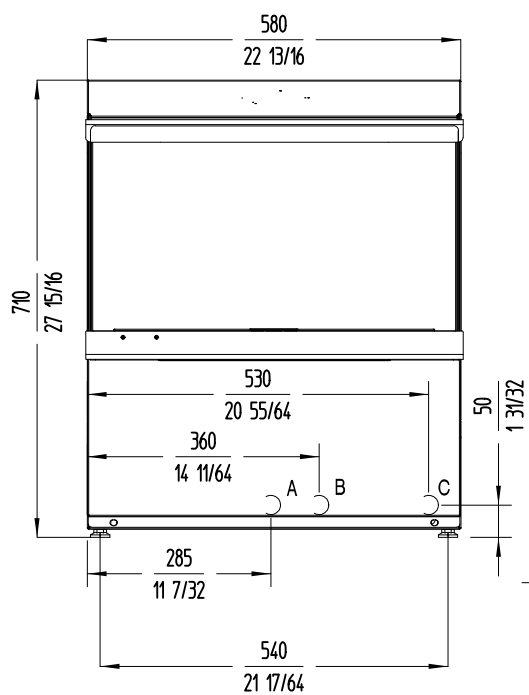
1303160 GP-50 230/50/1

1303161 GP-50 220/60/1

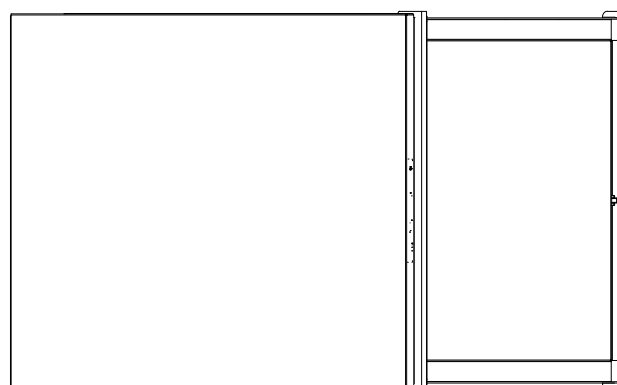
1303165 GP-50B 230/50/1

1303166 GP-50B 220/60/1

* Ask for special versions availability



A: Entrada de agua 3/4" GAS.
 B: Tubo de desague \varnothing 30 mm.
 C: Cable conexión.



GLASSWASHER GP-40

Rack size 400 mm x 400 mm and door clearance 240 mm.



SALES DESCRIPTION

Sani-Control guarantee

- ✓ GUARANTEED DISINFECTION in compliance with standard DIN 10534.
- ✓ THERMAL LOCK function: ensures that rinsing will be carried out at the ideal temperature to disinfect the dishes.
- ✓ Upper and lower washing.
- ✓ Construction in stainless steel AISI 304 2B.
- ✓ Interior with rounded finishes to prevent the accumulation of dirt.

Double filter system

- ✓ Maximum protection of the washing pump.

Double-walled door

- ✓ Double-walled door, safety microswitch and high quality seal: perfectly soundproof and watertight.

Warewashing, made simple

- ✓ GP Xperience: simple and intuitive use.
- ✓ Dedicated cycles: selection of the ideal washing programme using icons.
- ✓ Electronic control panel with IP65 humidity protection.
- ✓ 100% tested.

Tech-friendly

- ✓ Tool-free extraction of diffusers and filters for maintenance and cleaning.
- ✓ Easy access to components for repair.

INCLUDES

- ✓ Rinse aid pump.
- ✓ 1 mixed basket (plates).
- ✓ 1 glasses basket.
- ✓ 1 small basket for cutlery.

OPTIONAL

- ☐ Detergent dosing kit.
 - ☐ Overflow drainage pump. Tank
- water renewal by the principle of density.

ACCESSORIES

- ☐ Manual water softeners
- ☐ Automatic water softeners
- ☐ 400 x 400 mm baskets
- ☐ Inserts & supplements
- ☐ High feet kit
- ☐ Reverse osmosis devices OS-140
- ☐ Detergent dosing equipment for GP glasswashers

SPECIFICATIONS

Basket dimensions: 400 mm x 400 mm
Useful height: 240 mm

Cycle duration: 120 / 150"
Production baskets / hour: 30 / 24

Boiler capacity: 3.2 l
Wash tank capacity: 15 l
Water consumption/cycle: 2.2 l

Loading

- ✓ Pump: 250 W / 0.33 Hp
- ✓ Tank: 1200 W
- ✓ Boiler: 2500 W
- ✓ Total loading: 2750 W

Electrical connection: .

External dimensions (W x D x H)

- ✓ Width: 470 mm
- ✓ Depth: 535 mm
- ✓ Height: 670 mm

Noise level (1m.): <70 dB(A)

Crated dimensions
525 x 615 x 820 mm

AVAILABLE MODELS

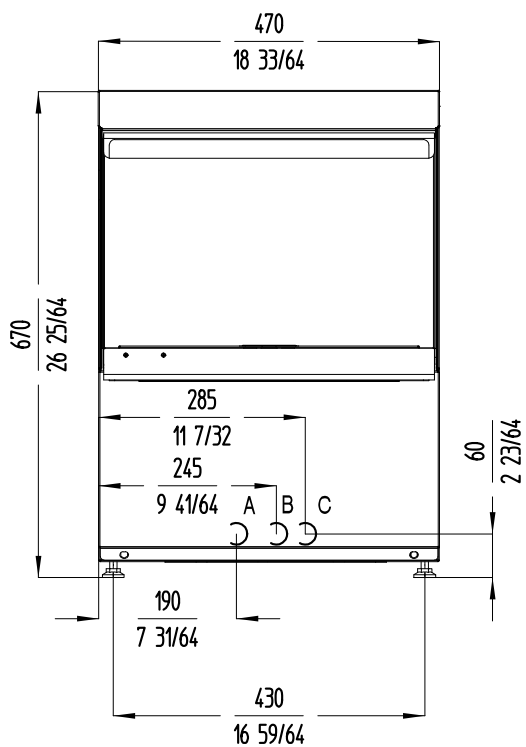
1303050 GP-40 230/50/1

1303051 GP-40 220/60/1

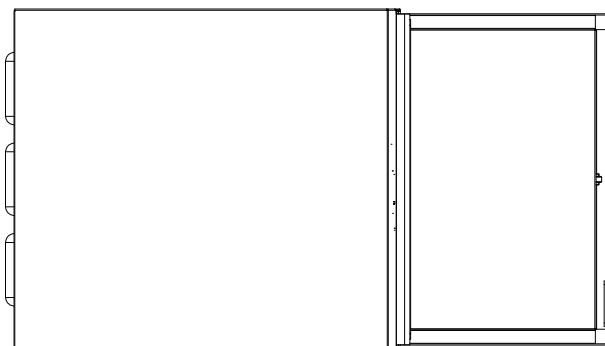
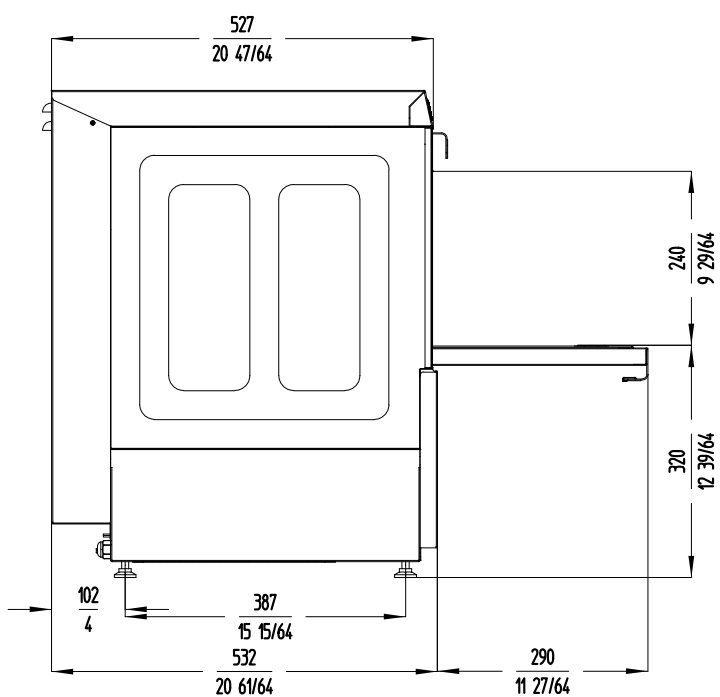
1303054 GP-40B 230/50/1

1303055 GP-40B 220/60/1

* Ask for special versions availability



A: Entrada de agua 3/4" GAS.
 B: Tubo de desague Ø30 mm
 C: Cable conexión



GLASSWASHER GP-35

Rack size 350 mm x 350 mm and door clearance 240 mm.



SALES DESCRIPTION

Sani-Control guarantee

- ✓ GUARANTEED DISINFECTION in compliance with standard DIN 10534.
- ✓ THERMAL LOCK function: ensures that rinsing will be carried out at the ideal temperature to disinfect the dishes.
- ✓ Upper and lower washing.
- ✓ Construction in stainless steel AISI 304 2B.
- ✓ Interior with rounded finishes to prevent the accumulation of dirt.

Double filter system

- ✓ Maximum protection of the washing pump.

Double-walled door

- ✓ Double-walled door, safety microswitch and high quality seal: perfectly soundproof and watertight.

Warewashing, made simple

- ✓ GP Xperience: simple and intuitive use.
- ✓ Dedicated cycles: selection of the ideal washing programme using icons.
- ✓ Electronic control panel with IP65 humidity protection.
- ✓ 100% tested.

Tech-friendly

- ✓ Tool-free extraction of diffusers and filters for maintenance and cleaning
- ✓ Easy access to components for repair.

INCLUDES

- ✓ Rinse aid pump.
- ✓ 1 mixed basket (plates).
- ✓ 1 glasses basket.
- ✓ 1 small basket for cutlery.

OPTIONAL

- ☐ Detergent dosing kit.
 - ☐ Overflow drainage pump. Tank
- water renewal by the principle of density.

ACCESSORIES

- ☐ Manual water softeners
- ☐ Automatic water softeners
- ☐ 350 x 350 mm baskets
- ☐ Inserts & supplements
- ☐ High feet kit
- ☐ Reverse osmosis devices OS-140
- ☐ Detergent dosing equipment for GP glasswashers

SPECIFICATIONS

Basket dimensions: 350 mm x 350 mm
Useful height: 240 mm

Cycle duration: 120 / 150"
Production baskets / hour: 30 / 24

Boiler capacity: 3.2 l
Wash tank capacity: 12.7 l
Water consumption/cycle: 2.2 l

Loading

- ✓ Pump: 75 W / 0.1 Hp
- ✓ Tank: 1200 W
- ✓ Boiler: 2500 W
- ✓ Total loading: 2575 W

Electrical connection: .

External dimensions (W x D x H)

- ✓ Width: 420 mm
- ✓ Depth: 495 mm
- ✓ Height: 645 mm

Noise level (1m.): <70 dB(A)

Crated dimensions
485 x 590 x 690 mm

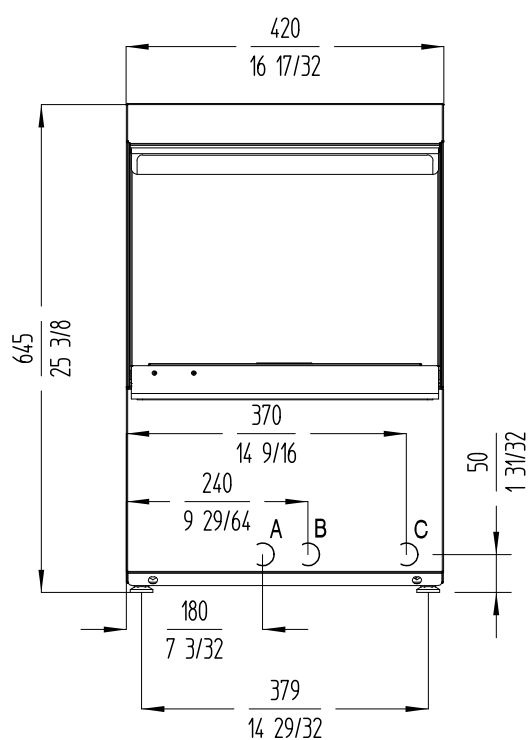
AVAILABLE MODELS

1303030 GP-35 230/50/1

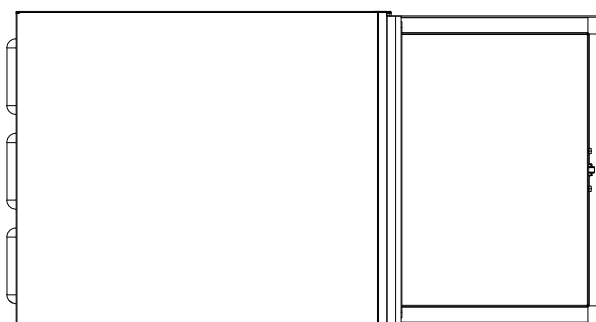
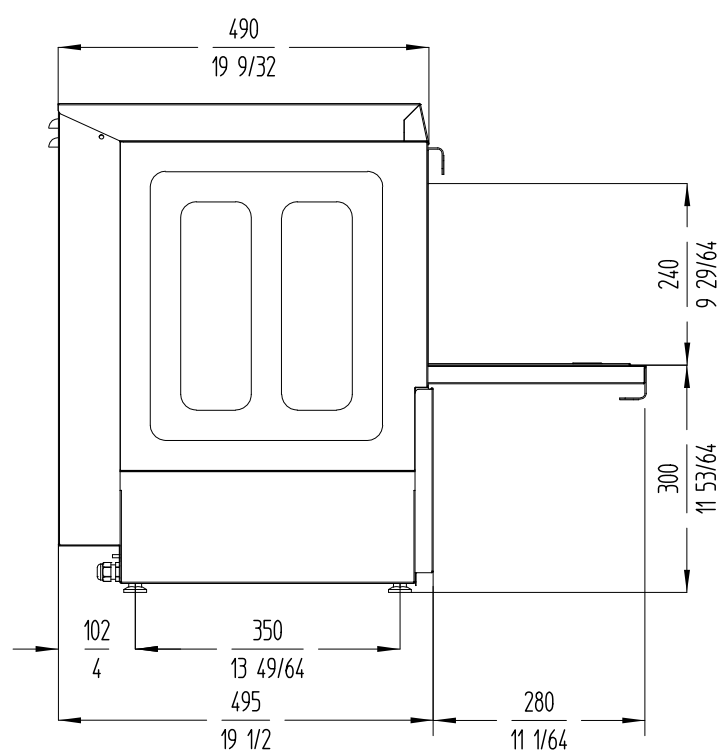
1303031 GP-35 220/60/1

1303035 GP-35B 230/50/1

* Ask for special versions availability



A: Entrada de agua 3/4" GAS.
 B: Tubo de desague $\varnothing 30$ mm.
 C: Cable conexión.





По вопросам продаж и поддержки обращайтесь:

Алматы (727)345-47-04	Иваново (4932)77-34-06	Магнитогорск (3519)55-03-13	Ростов-на-Дону (863)308-18-15	Тольятти (8482)63-91-07
Ангарск (3955)60-70-56	Ижевск (3412)26-03-58	Москва (495)268-04-70	Рязань (4912)46-61-64	Томск (3822)98-41-53
Архангельск (8182)63-90-72	Иркутск (395)279-98-46	Мурманск (8152)59-64-93	Самара (846)206-03-16	Тула (4872)33-79-87
Астрахань (8512)99-46-04	Казань (843)206-01-48	Набережные Челны (8552)20-53-41	Санкт-Петербург (812)309-46-40	Тюмень (3452)66-21-18
Барнаул (3852)73-04-60	Калининград (4012)72-03-81	Нижний Новгород (831)429-08-12	Саратов (845)249-38-78	Ульяновск (8422)24-23-59
Белгород (4722)40-23-64	Калуга (4842)92-23-67	Новокузнецк (3843)20-46-81	Севастополь (8692)22-31-93	Улан-Удэ (3012)59-97-51
Благовещенск (4162)22-76-07	Кемерово (3842)65-04-62	Ноябрьск (3496)41-32-12	Саранск (8342)22-96-24	Уфа (347)229-48-12
Брянск (4832)59-03-52	Киров (8332)68-02-04	Новосибирск (383)227-86-73	Симферополь (3652)67-13-56	Хабаровск (4212)92-98-04
Владивосток (423)249-28-31	Коломна (4966)23-41-49	Омск (3812)21-46-40	Смоленск (4812)29-41-54	Чебоксары (8352)28-53-07
Владикавказ (8672)28-90-48	Кострома (4942)77-07-48	Орел (4862)44-53-42	Сочи (862)225-72-31	Челябинск (351)202-03-61
Владимир (4922)49-43-18	Краснодар (861)203-40-90	Оренбург (3532)37-68-04	Ставрополь (8652)20-65-13	Череповец (8202)49-02-64
Волгоград (844)278-03-48	Красноярск (391)204-63-61	Пенза (8412)22-31-16	Сургут (3462)77-98-35	Чита (3022)38-34-83
Вологда (8172)26-41-59	Курск (4712)77-13-04	Петрозаводск (8142)55-98-37	Сыктывкар (8212)25-95-17	Якутск (4112)23-90-97
Воронеж (473)204-51-73	Курган (3522)50-90-47	Псков (8112)59-10-37	Тамбов (4752)50-40-97	Ярославль (4852)69-52-93
Екатеринбург (343)384-55-89	Липецк (4742)52-20-81	Пермь (342)205-81-47	Тверь (4822)63-31-35	

Россия +7(495)268-04-70	Казахстан +(727)345-47-04	Беларусь +(375)257-127-884	Узбекистан +998(71)205-18-59	Киргизия +996(312)96-26-47
-------------------------	---------------------------	----------------------------	------------------------------	----------------------------

эл.почта: sir@nt-rt.ru || сайт: <https://sammic.nt-rt.ru/>