

# Посудомоечные машины проходного типа

## Технические характеристики

По вопросам продаж и поддержки обращайтесь:

Алматы (727)345-47-04  
Ангарск (3955)60-70-56  
Архангельск (8182)63-90-72  
Астрахань (8512)99-46-04  
Барнаул (3852)73-04-60  
Белгород (4722)40-23-64  
Благовещенск (4162)22-76-07  
Брянск (4832)59-03-52  
Владивосток (423)249-28-31  
Владикавказ (8672)28-90-48  
Владимир (4922)49-43-18  
Волгоград (844)278-03-48  
Вологда (8172)26-41-59  
Воронеж (473)204-51-73  
Екатеринбург (343)384-55-89

Иваново (4932)77-34-06  
Ижевск (3412)26-03-58  
Иркутск (395)279-98-46  
Казань (843)206-01-48  
Калининград (4012)72-03-81  
Калуга (4842)92-23-67  
Кемерово (3842)65-04-62  
Киров (8332)68-02-04  
Коломна (4966)23-41-49  
Кострома (4942)77-07-48  
Краснодар (861)203-40-90  
Красноярск (391)204-63-61  
Курск (4712)77-13-04  
Курган (3522)50-90-47  
Липецк (4742)52-20-81

Магнитогорск (3519)55-03-13  
Москва (495)268-04-70  
Мурманск (8152)59-64-93  
Набережные Челны (8552)20-53-41  
Нижний Новгород (831)429-08-12  
Новокузнецк (3843)20-46-81  
Ноябрьск (3496)41-32-12  
Новосибирск (383)227-86-73  
Омск (3812)21-46-40  
Орел (4862)44-53-42  
Оренбург (3532)37-68-04  
Пенза (8412)22-31-16  
Петрозаводск (8142)55-98-37  
Псков (8112)59-10-37  
Пермь (342)205-81-47

Ростов-на-Дону (863)308-18-15  
Рязань (4912)46-61-64  
Самара (846)206-03-16  
Санкт-Петербург (812)309-46-40  
Саратов (845)249-38-78  
Севастополь (8692)22-31-93  
Саранск (8342)22-96-24  
Симферополь (3652)67-13-56  
Смоленск (4812)29-41-54  
Сочи (862)225-72-31  
Ставрополь (8652)20-65-13  
Сургут (3462)77-98-35  
Сыктывкар (8212)25-95-17  
Тамбов (4752)50-40-97  
Тверь (4822)63-31-35

Тольятти (8482)63-91-07  
Томск (3822)98-41-53  
Тула (4872)33-79-87  
Тюмень (3452)66-21-18  
Ульяновск (8422)24-23-59  
Улан-Удэ (3012)59-97-51  
Уфа (347)229-48-12  
Хабаровск (4212)92-98-04  
Чебоксары (8352)28-53-07  
Челябинск (351)202-03-61  
Череповец (8202)49-02-64  
Чита (3022)38-34-83  
Якутск (4112)23-90-97  
Ярославль (4852)69-52-93

Россия +7(495)268-04-70

Казахстан +(727)345-47-04

Беларусь +(375)257-127-884

Узбекистан +998(71)205-18-59

Киргизия +996(312)96-26-47

эл.почта: [sir@nt-rt.ru](mailto:sir@nt-rt.ru) || сайт: <https://sammic.nt-rt.ru/>

# PASS-THROUGH DISHWASHER AX-100

Rack size 500 mm x 500 mm and door clearance 430 mm.



## SALES DESCRIPTION

- ✓ Sani-Control: guaranteed disinfection.
- ✓ Exclusive Hydroblade™ washing arms: maximum effectiveness.
- ✓ 3-stage filtering system.

### Sani-Control guarantee

- ✓ GUARANTEED DISINFECTION in compliance with standard DIN 10534.
- ✓ THERMAL LOCK function: Ensures that rinsing will be carried out at the ideal temperature to disinfect the dishes.

### New recessed bodywork

- ✓ Ergonomic design with rounded corners to prevent the accumulation of dirt and facilitate cleaning.
- ✓ Compact tank volume (50% water saving compared to the previous range).

### Hydroblade™ washing arms

- ✓ Redesigned nozzles for greater washing performance.
- ✓ The “monoblock” design delivers durability and resistance to impacts.
- ✓ 30% savings in water consumption during rinsing compared to the previous range.

### 3-stage filter system: surface, tank and extraction

- ✓ Keeps the washing water in optimal conditions to maintain constant washing performance.

### Designed to last

- ✓ “Flow” opening mechanism: allows the hood to be raised with less effort.
- ✓ High load capacity 43 cm: suitable for GN 1/1 and Euronorm.
- ✓ Stainless steel surface filters for greater stability and resistance during intensive use.

### Warewashing, made simple

- ✓ Active Xperience: simple and intuitive use.
- ✓ Dedicated cycles: selection of the ideal washing programme using icons.
- ✓ Electronic control panel with IP65 humidity protection.

### You will never WASH ALONE

- ✓ Tech-Services: our team of technicians will help you so that your machine is always ready for use.
- ✓ Design Services: tell us what your needs are and we will advise you.
- ✓ 60 years of experience and know-how at your disposal.

## INCLUDES

- ✓ Rinse aid pump.
- ✓ 1 glasses basket.
- ✓ 1 mixed basket (plates).
- ✓ 1 small basket for cutlery.

## OPTIONAL

- ☐ Detergent dosing kit.
- ☐ Overflow drainage pump. Tank
- water renewal by the principle of density.

## ACCESSORIES

- ☐ Tables for pass-through dishwashers
- ☐ Manual water softeners
- ☐ Automatic water softeners
- ☐ 500 x 500 mm baskets
- ☐ Inserts & supplements
- ☐ Central sorting tables
- ☐ Double connection central sorting table
- ☐ Prewashing tables for pass-through and rack conveyor dishwashers
- ☐ Connecting tables for pass-through dishwashers and rack conveyors
- ☐ Reverse osmosis devices OS-140
- ☐ Dosing equipments for AX / UX hood-type dishwashers

## SPECIFICATIONS

Basket dimensions: 500 mm x 500 mm  
Useful height: 430 mm

Cycles: 3

Cycle duration: 120 / 180 / 210"

Production baskets / hour: 30 / 24 / 17

- ✓ Boiler capacity: 8 l
  - ✓ Wash tank capacity: 25 l
  - ✓ Water consumption/cycle: 3 l
- Energy consumption

Water consumption/cycle (kWh): 0,26 kWh

Tank filling consumption (kWh): 1,07 kWh

Loading

- ✓ Pump: 750 W / 1 Hp
- ✓ Tank: 2500 W
- ✓ Boiler: 6000 W
- ✓ Total loading: 6700 W

External dimensions (W x D x H)

- ✓ Width: 650 mm (Wide with handle: 725 mm)
- ✓ Depth: 755 mm (Bottom with handle: 835 mm)
- ✓ Height: 2000 mm / 1525 mm

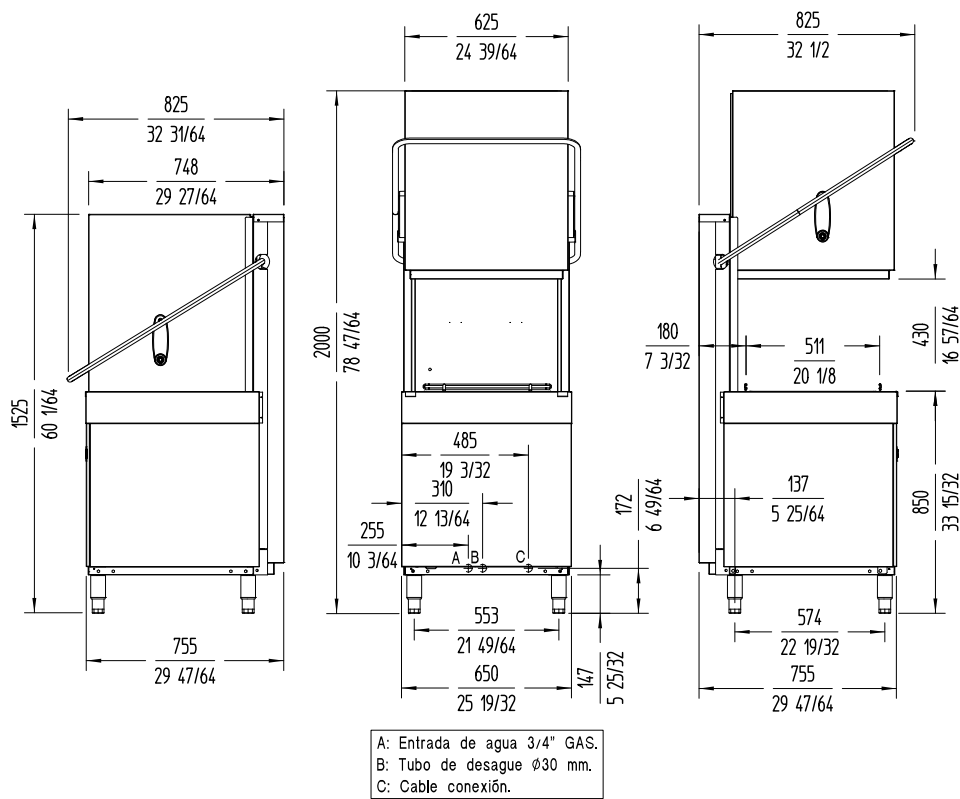
Wash temperature: 65°C  
Rinse temperature: 85°C  
Noise level (1m.): <70 dB(A)

Crated dimensions  
760 x 860 x 1530 mm  
Gross weight: 113 kg

AVAILABLE MODELS

1303300	AX-100 400/50/3N
1303303	AX-100 220/60/3
1303309	AX-100 220/60/1
1303305	AX-100B 400/50/3N
1303308	AX-100B 220/60/3

\* Ask for special versions availability



# PASS-THROUGH DISHWASHER UX-100

Rack size 500 mm x 500 mm and door clearance 430 mm.



## SALES DESCRIPTION

- ✓ Sani-Control: guaranteed disinfection.
- ✓ Exclusive Hydroblade™ washing arms: maximum effectiveness.
- ✓ 3-stage filtering system.

### Sani-Control guarantee

- ✓ GUARANTEED DISINFECTION in compliance with standard DIN 10534.
- ✓ THERMAL LOCK function: Ensures that rinsing will be carried out at the ideal temperature to disinfect the dishes.

### New recessed bodywork

- ✓ Ergonomic design with rounded corners to prevent the accumulation of dirt and facilitate cleaning.
- ✓ Compact tank volume (50% water saving compared to the previous range).

### Hydroblade™ washing arms

- ✓ Redesigned nozzles for greater washing performance.
- ✓ The “monoblock” design delivers durability and resistance to impacts.
- ✓ 30% savings in water consumption during rinsing compared to the previous range.

### 3-stage filter system: surface, tank and extraction

- ✓ Keeps the washing water in optimal conditions to maintain constant washing performance.

### Designed to last

- ✓ “Flow” opening mechanism: allows the hood to be raised with less effort.
- ✓ High load capacity 43 cm: suitable for GN 1/1 and Euronorm.
- ✓ Stainless steel surface filters for greater stability and resistance during intensive use.

### Premium warewashing

- ✓ Soft start: progressive start-up of the washing pump to protect fragile items.
- ✓ Colour LCD Display: intuitive communication of the machine status by means of messages, colour codes and icons.
- ✓ Dedicated cycles: selection of the ideal washing programme using icons.
- ✓ Adaptable: allows the main parameters of the machine to be adjusted to the needs of each user.
- ✓ TEMPERATURE DISPLAY.
- ✓ Wash Plus+ function: increases the intensity of the wash cycle for greater cleaning performance.
- ✓ Control panel with IP65 humidity protection.

### You will never WASH ALONE

- ✓ Tech-Services: our team of technicians will help you so that your machine is always ready for use.
- ✓ Design Services: tell us what your needs are and we will advise you.
- ✓ 60 years of experience and know-how at your disposal.

## INCLUDES

- ✓ Rinse aid pump.
- ✓ 1 mixed basket (plates).
- ✓ 1 glasses basket.
- ✓ 1 cutlery basket.

## OPTIONAL

- ☐ Detergent dosing kit.
- ☐ Drainage pump with level sensor. Proactive tank water renewal.

## ACCESSORIES

- ☐ Tables for pass-through dishwashers
- ☐ Manual water softeners
- ☐ Automatic water softeners
- ☐ 500 x 500 mm baskets
- ☐ Inserts & supplements
- ☐ Central sorting tables
- ☐ Double connection central sorting table
- ☐ Prewashing tables for pass-through and rack conveyor dishwashers
- ☐ Connecting tables for pass-through dishwashers and rack conveyors
- ☐ Reverse osmosis devices OS-140
- ☐ Dosing equipments for AX / UX hood-type dishwashers
- ☐ External control panel for UX pass-through dishwashers

## SPECIFICATIONS

Basket dimensions: 500 mm x 500 mm

Useful height: 430 mm

Cycles: 6

Cycle duration: 60 / 90 / 100 / 150 / 210"

Production baskets / hour: 60 / 40 / 36 / 24 / 17

Boiler capacity: 8 l

Wash tank capacity: 25 l

### Consumption and savings

- ✓ Water consumption/cycle: 2.8 l
- ✓ Automatic saving mode in: 25'
- ✓ Automatic switch-off: 120'

### Energy consumption

— Water consumption/cycle (kWh): 0,22 kWh

Tank filling consumption (kWh): 1,07 kWh

Loading\_\_

External dimensions (W x D x H)

Net weight: 102 kg

Wash temperature: 55°C

Rinse temperature: 87°C

Noise level (1m.): <70 dB(A)

✓ Pump: 750 W / 1 Hp

✓ Tank: 2500 W

✓ Boiler: 7500 W

✓ Total loading: 8250 W

✓ Width:650 mm (Wide with handle: 725 mm)

✓ Depth: 755 mm (Bottom with handle: 835 mm)

✓ Height: 2000 mm / 1525 mm

Crated dimensions

760 x 860 x 1530 mm

Gross weight: 113 kg

AVAILABLE MODELS

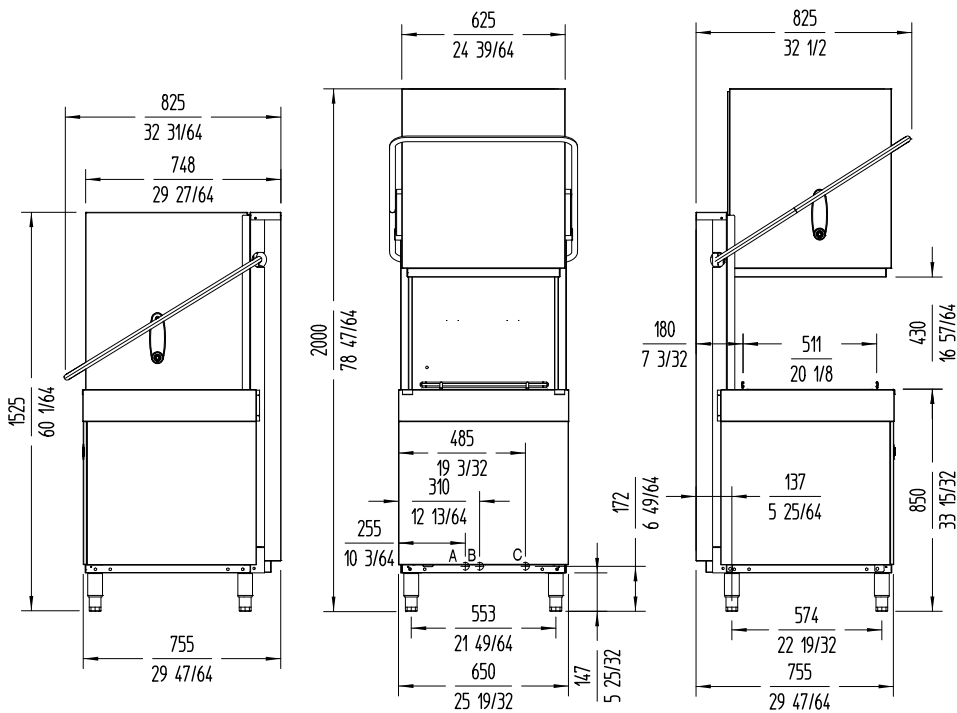
1303320 UX-100 400/50/3N

1303330 UX-100 400/60/3N

1303323 UX-100B 400/50/3N

1303319 UX-100 220/60/3

\* Ask for special versions availability



A: Entrada de agua 3/4" GAS.  
B: Tubo de desague Ø30 mm.  
C: Cable conexión.

# PASS-THROUGH DISHWASHER UX-120

Rack size 500 mm x 500 mm and door clearance 430 mm.



## SALES DESCRIPTION

- ✓ Sani-Control: guaranteed disinfection.
- ✓ Exclusive Hydroblade™ washing arms: maximum effectiveness.
- ✓ 3-stage filtering system.

### Sani-Control guarantee

- ✓ GUARANTEED DISINFECTION in compliance with standard DIN 10534.
- ✓ THERMAL LOCK function: Ensures that rinsing will be carried out at the ideal temperature to disinfect the dishes.

### New recessed bodywork

- ✓ Ergonomic design with rounded corners to prevent the accumulation of dirt and facilitate cleaning.
- ✓ Compact tank volume (50% water saving compared to the previous range).

### Hydroblade™ washing arms

- ✓ Redesigned nozzles for greater washing performance.
- ✓ The “monoblock” design delivers durability and resistance to impacts.
- ✓ 30% savings in water consumption during rinsing compared to the previous range.

### 3-stage filter system: surface, tank and extraction

- ✓ Keeps the washing water in optimal conditions to maintain constant washing performance.

### Designed to last

- ✓ “Flow” opening mechanism: allows the hood to be raised with less effort.
- ✓ High load capacity 43 cm: suitable for GN 1/1 and Euronorm.
- ✓ Stainless steel surface filters for greater stability and resistance during intensive use.

### Premium warewashing

- ✓ Soft start: progressive start-up of the washing pump to protect fragile items.
- ✓ Colour LCD Display: intuitive communication of the machine status by means of messages, colour codes and icons.
- ✓ Dedicated cycles: selection of the ideal washing programme using icons.
- ✓ Adaptable: allows the main parameters of the machine to be adjusted to the needs of each user.
- ✓ TEMPERATURE DISPLAY.
- ✓ Wash Plus+ function: increases the intensity of the wash cycle for greater cleaning performance.
- ✓ Control panel with IP65 humidity protection.

### You will never WASH ALONE

- ✓ Tech-Services: our team of technicians will help you so that your machine is always ready for use.
- ✓ Design Services: tell us what your needs are and we will advise you.
- ✓ 60 years of experience and know-how at your disposal.

## INCLUDES

- ✓ Rinse aid pump.
- ✓ 1 mixed basket (plates).
- ✓ 1 glasses basket.
- ✓ 1 cutlery basket.

## OPTIONAL

- ☐ Detergent dosing kit.
- ☐ Drainage pump with level sensor. Proactive tank water renewal.

## ACCESSORIES

- ☐ Tables for pass-through dishwashers
- ☐ Manual water softeners
- ☐ Automatic water softeners
- ☐ 500 x 500 mm baskets
- ☐ Inserts & supplements
- ☐ Central sorting tables
- ☐ Double connection central sorting table
- ☐ Prewashing tables for pass-through and rack conveyor dishwashers
- ☐ Connecting tables for pass-through dishwashers and rack conveyors
- ☐ Reverse osmosis devices OS-140
- ☐ Dosing equipments for AX / UX hood-type dishwashers
- ☐ External control panel for UX pass-through dishwashers

## SPECIFICATIONS

Basket dimensions: 500 mm x 500 mm

Useful height: 430 mm

Cycles: 6

Cycle duration: 60 / 90 / 100 / 150 / 210"

Production baskets / hour: 60 / 40 / 36 / 24 / 17

Boiler capacity: 12 l

Wash tank capacity: 25 l

### Consumption and savings

- ✓ Water consumption/cycle: 2.8 l
- ✓ Automatic saving mode in: 25'
- ✓ Automatic switch-off: 120'

### Energy consumption

— Water consumption/cycle (kWh): 0,22 kWh

# PASS-THROUGH DISHWASHER UX-120

Rack size 500 mm x 500 mm and door clearance 430 mm.

## Tank filling consumption (kWh): 1,07 kWh

Loading\_\_

- ✓ Pump: 1000 W / 1.3 Hp
- ✓ Tank: 2500 W
- ✓ Boiler: 9000 W
- ✓ Total loading: 10000 W

## External dimensions (W x D x H)

- ✓ Width: 650 mm (Wide with handle: 725 mm)
- ✓ Depth: 755 mm (Bottom with handle: 835 mm)
- ✓ Height: 2000 mm / 1525 mm

Wash temperature: 65°C

Rinse temperature: 87°C

Noise level (1m.): <70 dB(A)

Crated dimensions

760 x 860 x 1530 mm

Gross weight: 115 kg

## AVAILABLE MODELS

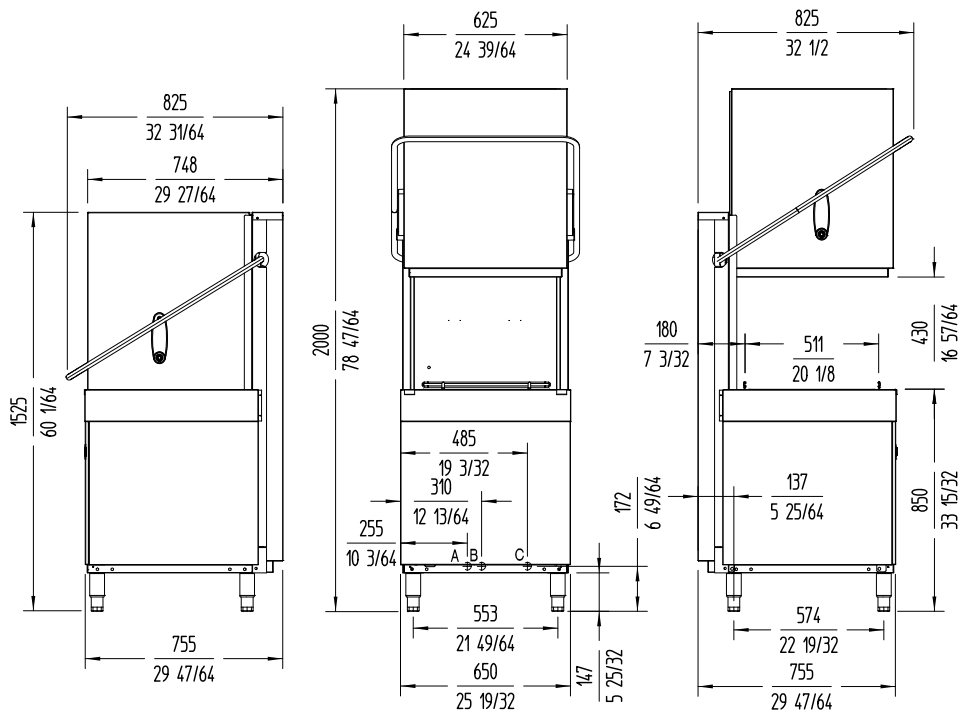
1303340 UX-120 400/50/3N

1303343 UX-120 220/60/3

1303344 UX-120B 400/50/3N

1303347 UX-120B 220/60/3

\* Ask for special versions availability



A: Entrada de agua 3/4" GAS.  
B: Tubo de desague Ø30 mm.  
C: Cable conexión.

# PASS-THROUGH DISHWASHER UX-120C

Rack size 500 mm x 500 mm and door clearance 430 mm.



- ✓ High load capacity 43 cm: suitable for GN 1/1 and Euronorm
- ✓ Stainless steel surface filters for greater stability and resistance during intensive use

## Premium warewashing

- ✓ Soft start: progressive start-up of the washing pump to protect fragile items.
- ✓ Colour LCD Display: intuitive communication of the machine status by means of messages, colour codes and icons.
- ✓ Dedicated cycles: selection of the ideal washing programme using icons.
- ✓ Adaptable: allows the main parameters of the machine to be adjusted to the needs of each user.
- ✓ TEMPERATURE DISPLAY
- ✓ Wash Plus+ function: increases the intensity of the wash cycle for greater cleaning performance
- ✓ Control panel with IP65 humidity protection.

## You will never WASH ALONE

- ✓ Tech-Services: our team of technicians will help you so that your machine is always ready for use.
- ✓ Design Services: tell us what your needs are and we will advise you.
- ✓ 60 years of experience and know-how at your disposal.

## SALES DESCRIPTION

Sani-Control: guaranteed disinfection  
Exclusive Hydroblade™ washing arms: maximum effectiveness.  
3-stage filtering system.

### Sani-Control guarantee

- ✓ GUARANTEED DISINFECTION in compliance with standard DIN 10534.
- ✓ THERMAL LOCK function: Ensures that rinsing will be carried out at the ideal temperature to disinfect the dishes.
- ✓ CONSTANT HIGH TEMPERATURE RINSE system for optimal disinfection.
- ✓ The PRESSURE PUMP guarantees effective high-pressure rinsing
- ✓ WRAS certified.

### New recessed bodywork

- ✓ Ergonomic design with rounded corners to prevent the accumulation of dirt and facilitate cleaning.
- ✓ Compact tank volume (50% water saving compared to the previous range).

### Hydroblade™ washing arms

- ✓ Redesigned nozzles for greater washing performance.
- ✓ The “monoblock” design delivers durability and resistance to impacts.
- ✓ 30% savings in water consumption during rinsing compared to the previous range.

### 3-stage filter system: surface, tank and extraction

- ✓ Keeps the washing water in optimal conditions to maintain constant washing performance.

### Designed to last

- ✓ “Flow” opening mechanism: allows the hood to be raised with less effort

## INCLUDES

- ✓ Drainage pump with level sensor. Proactive tank water renewal.
- ✓ Rinse aid pump.
- ✓ 1 glasses basket.
- ✓ 1 mixed basket (plates).
- ✓ 1 cutlery basket.

## OPTIONAL

- ☐ Detergent dosing kit.
- ☐ Automatic resin regeneration water softener with salt detector.

## ACCESSORIES

- ☐ Tables for pass-through dishwashers
- ☐ Manual water softeners
- ☐ Automatic water softeners
- ☐ 500 x 500 mm baskets
- ☐ Inserts & supplements
- ☐ Central sorting tables
- ☐ Double connection central sorting table
- ☐ Prewashing tables for pass-through and rack conveyor dishwashers
- ☐ Connecting tables for pass-through dishwashers and rack conveyors
- ☐ Reverse osmosis devices OS-140
- ☐ Dosing equipments for AX / UX hood-type dishwashers

## SPECIFICATIONS

Basket dimensions: 500 mm x 500 mm

Useful height: 430 mm

Cycles: 6

Cycle duration: 60/90/100/150/210"

Production baskets / hour: 60/40/36/24/17

Boiler capacity: 12 l

Wash tank capacity: 25 l

### Consumption and savings

- ✓ Water consumption/cycle: 2.8 l
- ✓ Automatic saving mode in: 25'
- ✓ Automatic switch-off: 120'

### Loading

- ✓ Pump: 1000 W / 1.3 Hp



- ✓ Tank: 2500 W
- ✓ Boiler: 9000 W
- ✓ Total loading: 10000 W

#### External dimensions (W x D x H)

- ✓ Width: 650 mm (Wide with handle: 725 mm)
- ✓ Depth: 755 mm (Bottom with handle: 835 mm)
- ✓ Height: 2000 mm / 1525 mm

Net weight: 116 kg

Wash temperature: 70°C

Rinse temperature: 87°C  
Noise level (1m.): <70 dB(A)

#### Crated dimensions

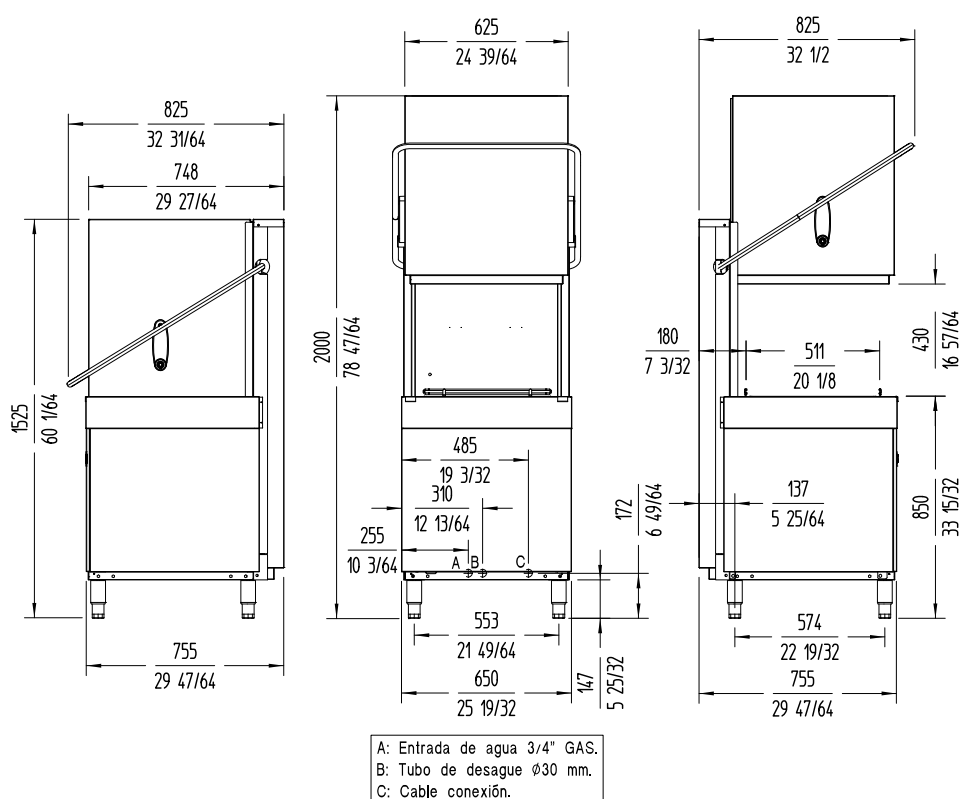
760 x 860 x 1530 mm

Gross weight: 127 kg

### AVAILABLE MODELS

1303363 UX-120BCD 220/60/3 DD

\* Ask for special versions availability



# PASS-THROUGH DISHWASHER UX-120V

Rack size 500 mm x 500 mm and door clearance 430 mm.



- ✓ “Flow” opening mechanism: allows the hood to be raised with less effort
- ✓ High load capacity 43 cm: suitable for GN 1/1 and Euronorm
- ✓ Stainless steel surface filters for greater stability and resistance during intensive use

## Premium warewashing

- ✓ Soft start: progressive start-up of the washing pump to protect fragile items.
- ✓ Colour LCD Display: intuitive communication of the machine status by means of messages, colour codes and icons.
- ✓ Dedicated cycles: selection of the ideal washing programme using icons.
- ✓ Adaptable: allows the main parameters of the machine to be adjusted to the needs of each user.
- ✓ TEMPERATURE DISPLAY
- ✓ Wash Plus+ function: increases the intensity of the wash cycle for greater cleaning performance
- ✓ Control panel with IP65 humidity protection.

## You will never WASH ALONE

- ✓ Tech-Services: our team of technicians will help you so that your machine is always ready for use.
- ✓ Design Services: tell us what your needs are and we will advise you.
- ✓ 60 years of experience and know-how at your disposal.

## SALES DESCRIPTION

Sani-Control: guaranteed disinfection  
Exclusive Hydroblade™ washing arms: maximum effectiveness.  
3-stage filtering system.  
Steam condenser: environmental improvement and energy efficiency.

### Sani-Control guarantee

- ✓ GUARANTEED DISINFECTION in compliance with standard DIN 10534.
- ✓ THERMAL LOCK function: Ensures that rinsing will be carried out at the ideal temperature to disinfect the dishes.

### Steam condenser

- ✓ Reduces the steam released into the installation by 75%.
- ✓ Factory-integrated condenser module, no installation required.

### New recessed bodywork

- ✓ Ergonomic design with rounded corners to prevent the accumulation of dirt and facilitate cleaning.
- ✓ Compact tank volume (50% water saving compared to the previous range).

### Hydroblade™ washing arms

- ✓ Redesigned nozzles for greater washing performance.
- ✓ The “monoblock” design delivers durability and resistance to impacts.
- ✓ 30% savings in water consumption during rinsing compared to the previous range.

### 3-stage filter system: surface, tank and extraction

- ✓ Keeps the washing water in optimal conditions to maintain constant washing performance.

### Designed to last

## INCLUDES

- ✓ Rinse aid pump.
- ✓ 1 glasses basket.
- ✓ 1 mixed basket (plates).
- ✓ 1 cutlery basket.
- ✓ Drainage pump with level sensor. Proactive tank water renewal.

## OPTIONAL

- ☐ Detergent dosing kit.

## ACCESSORIES

- ☐ Tables for pass-through dishwashers
- ☐ Manual water softeners
- ☐ Automatic water softeners
- ☐ 500 x 500 mm baskets
- ☐ Inserts & supplements
- ☐ Central sorting tables
- ☐ Double connection central sorting table
- ☐ Prewashing tables for pass-through and rack conveyor dishwashers
- ☐ Connecting tables for pass-through dishwashers and rack conveyors
- ☐ Reverse osmosis devices OS-140
- ☐ Dosing equipments for AX / UX hood-type dishwashers

## SPECIFICATIONS

Basket dimensions: 500 mm x 500 mm

Useful height: 430 mm

Cycles: 6

Cycle duration: 60/90/100/150/210"

Production baskets / hour: 60/40/36/24/17

Boiler capacity: 12 l

Wash tank capacity: 25 l

### Consumption and savings

- ✓ Water consumption/cycle: 2.8 l
- ✓ Automatic saving mode in: 25'
- ✓ Automatic switch-off: 120'

### Loading

- ✓ Pump: 1000 W / 1.3 Hp

- ✓ Tank: 2500 W
- ✓ Total loading: 10000 W
- ✓ Boiler: 9000 W

#### External dimensions (W x D x H)

- ✓ Width: 650 mm (Wide with handle: 725 mm)
- ✓ Depth: 755 mm (Bottom with handle: 835 mm)
- ✓ Height: 2035 mm / 2035 mm

Net weight: 125 kg

Wash temperature: 65°C

Rinse temperature: 87°C  
Noise level (1m.): <70 dB(A)

#### Crated dimensions

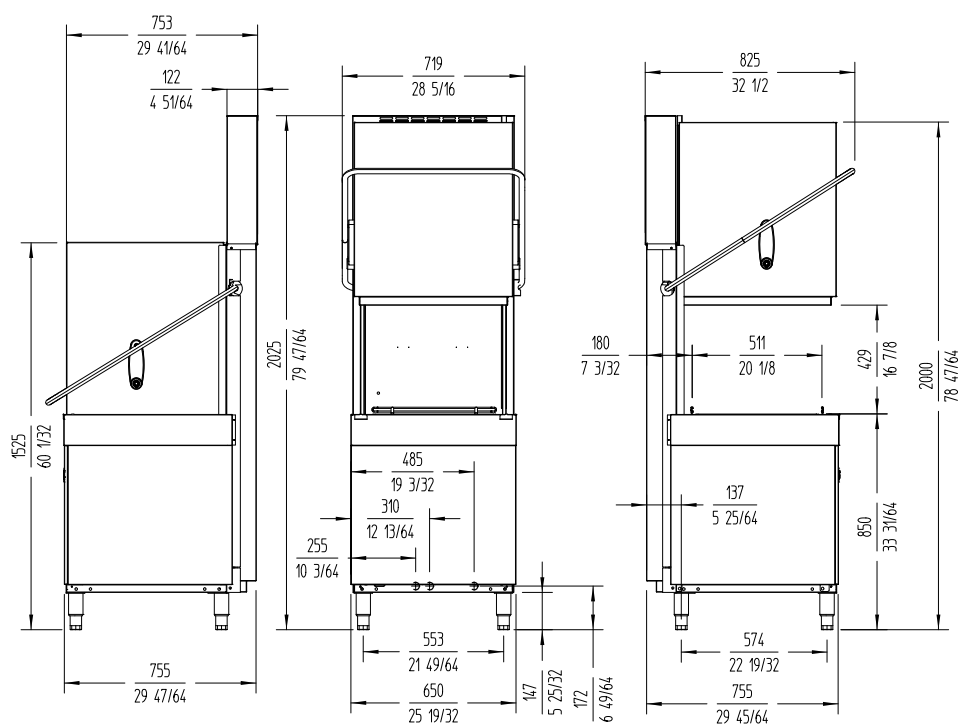
760 x 860 x 2050 mm

Gross weight: 136 kg

### AVAILABLE MODELS

1303368 UX-120BV 220/60/3 DD

*\* Ask for special versions availability*



# PASS-THROUGH DISHWASHER UX-120CV

Rack size 500 mm x 500 mm and door clearance 430 mm.



## SALES DESCRIPTION

**Sani-Control:** guaranteed disinfection  
**Exclusive Hydroblade™** washing arms: maximum effectiveness.  
**3-stage filtering system.**  
**Steam condenser:** environmental improvement and energy efficiency.

### Sani-Control guarantee

- ✓ **GUARANTEED DISINFECTION** in compliance with standard DIN 10534.
- ✓ **THERMAL LOCK** function: Ensures that rinsing will be carried out at the ideal temperature to disinfect the dishes.
- ✓ **CONSTANT HIGH TEMPERATURE RINSE** system for optimal disinfection.
- ✓ The **PRESSURE PUMP** guarantees effective high-pressure rinsing
- ✓ **WRAS** certified.

### Steam condenser

- ✓ Reduces the steam released into the installation by 75%.
- ✓ Factory-integrated condenser module, no installation required.

### New recessed bodywork

- ✓ Ergonomic design with rounded corners to prevent the accumulation of dirt and facilitate cleaning.
- ✓ Compact tank volume (50% water saving compared to the previous range).

### Hydroblade™ washing arms

- ✓ Redesigned nozzles for greater washing performance.
- ✓ The “monoblock” design delivers durability and resistance to impacts.
- ✓ 30% savings in water consumption during rinsing compared to the previous range.

### 3-stage filter system: surface, tank and extraction

- ✓ Keeps the washing water in optimal conditions to maintain constant washing performance.

### Designed to last

- ✓ “Flow” opening mechanism: allows the hood to be raised with less effort
- ✓ High load capacity 43 cm: suitable for GN 1/1 and Euronorm
- ✓ Stainless steel surface filters for greater stability and resistance during intensive use

### Premium warewashing

- ✓ Soft start: progressive start-up of the washing pump to protect fragile items.
- ✓ Colour LCD Display: intuitive communication of the machine status by means of messages, colour codes and icons.
- ✓ Dedicated cycles: selection of the ideal washing programme using icons.
- ✓ Adaptable: allows the main parameters of the machine to be adjusted to the needs of each user.
- ✓ **TEMPERATURE DISPLAY**
- ✓ Wash Plus+ function: increases the intensity of the wash cycle for greater cleaning performance
- ✓ Control panel with IP65 humidity protection.

### You will never WASH ALONE

- ✓ Tech-Services: our team of technicians will help you so that your machine is always ready for use.
- ✓ Design Services: tell us what your needs are and we will advise you.
- ✓ 60 years of experience and know-how at your disposal.

## INCLUDES

- ✓ Rinse aid pump.
- ✓ 1 glasses basket.
- ✓ 1 mixed basket (plates).
- ✓ 1 cutlery basket.
- ✓ Drainage pump with level sensor. Proactive tank water renewal.

## OPTIONAL

- ☐ Detergent dosing kit.
- ☐ Automatic resin regeneration water softener with salt detector.

## ACCESSORIES

- ☐ Tables for pass-through dishwashers
- ☐ Manual water softeners
- ☐ Automatic water softeners
- ☐ 500 x 500 mm baskets
- ☐ Inserts & supplements
- ☐ Central sorting tables
- ☐ Double connection central sorting table
- ☐ Prewashing tables for pass-through and rack conveyor dishwashers
- ☐ Connecting tables for pass-through dishwashers and rack conveyors
- ☐ Reverse osmosis devices OS-140
- ☐ Dosing equipments for AX / UX hood-type dishwashers

## SPECIFICATIONS

Basket dimensions: 500 mm x 500 mm

Useful height: 430 mm

Cycles: 6

Cycle duration: 60/90/100/150/210"

Production baskets / hour: 60/40/36/24/17

Boiler capacity: 12 l

Wash tank capacity: 25 l

### Consumption and savings

- ✓ Automatic saving mode in: 25'

✓ Automatic switch-off: 120'

### Loading

- ✓ Pump: 1000 W / 1.3 Hp
- ✓ Tank: 2500 W
- ✓ Boiler: 9000 W
- ✓ Total loading: 10000 W

### External dimensions (W x D x H)

- ✓ Width: 650 mm (Wide with handle: 725 mm)
- ✓ Depth: 755 mm (Bottom with handle: 835 mm)
- ✓ Height: 2035 mm / 2035 mm

Net weight: 137 kg

Rinse temperature: 87°C  
Noise level (1m.): <70 dB(A)

### Crated dimensions

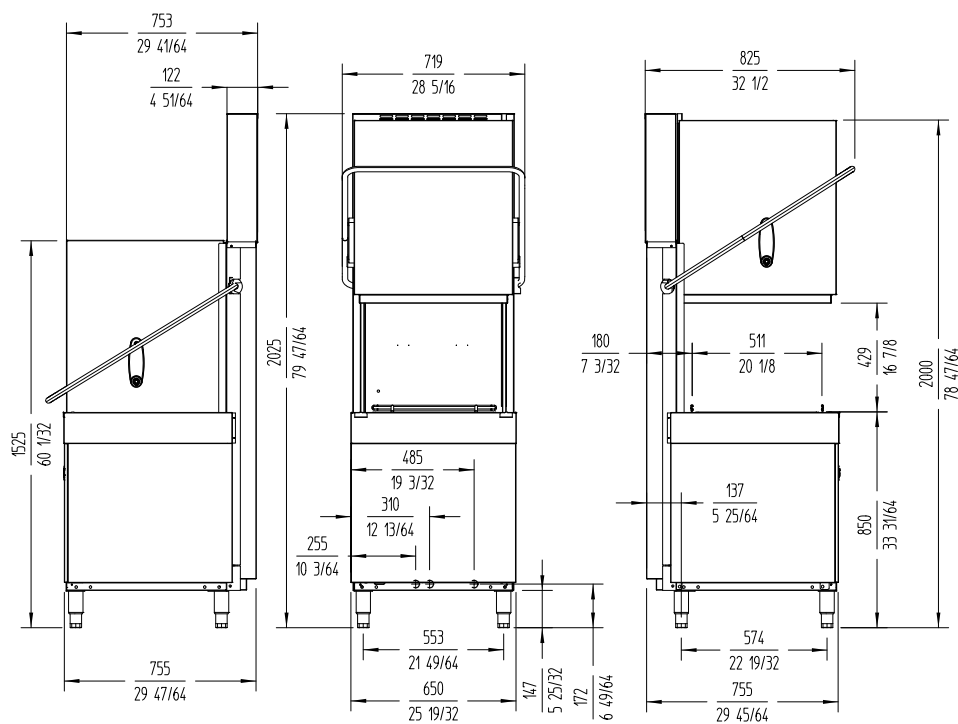
760 x 860 x 2050 mm

## AVAILABLE MODELS

1303373 UX-120BCV 220/60/3 DD

1303378 UX-120BCDV 220/60/3 DD

\* Ask for special versions availability



# PASS-THROUGH DISHWASHER UX-120 ISO

Rack size 500 mm x 500 mm and door clearance 430 mm. Double-skinned hood.



## SALES DESCRIPTION

Sani-Control: guaranteed disinfection  
Double-walled hood: insulation and energy efficiency  
Exclusive Hydroblade™ washing arms: maximum effectiveness.  
3-stage filtering system.

### Sani-Control guarantee

- ✓ GUARANTEED DISINFECTION in compliance with standard DIN 10534.
- ✓ THERMAL LOCK function: Ensures that rinsing will be carried out at the ideal temperature to disinfect the dishes.

### New recessed bodywork

- ✓ Ergonomic design with rounded corners to prevent the accumulation of dirt and facilitate cleaning.
- ✓ Compact tank volume (50% water saving compared to the previous range).

### Double-Walled (Ultra ISO)

- ✓ Double-Walled Structure: thermo-acoustic insulation to attenuate the sound level and improve energy efficiency

### Hydroblade™ washing arms

- ✓ Redesigned nozzles for greater washing performance.
- ✓ The “monoblock” design delivers durability and resistance to impacts.
- ✓ 30% savings in water consumption during rinsing compared to the previous range.

### 3-stage filter system: surface, tank and extraction

- ✓ Keeps the washing water in optimal conditions to maintain constant washing performance.

### Designed to last

- ✓ “Flow” opening mechanism: allows the hood to be raised with less effort

- ✓ High load capacity 43 cm: suitable for GN 1/1 and Euronorm
- ✓ Stainless steel surface filters for greater stability and resistance during intensive use

### Premium warewashing

- ✓ Soft start: progressive start-up of the washing pump to protect fragile items.
- ✓ Colour LCD Display: intuitive communication of the machine status by means of messages, colour codes and icons.
- ✓ Dedicated cycles: selection of the ideal washing programme using icons.
- ✓ Adaptable: allows the main parameters of the machine to be adjusted to the needs of each user.
- ✓ TEMPERATURE DISPLAY
- ✓ Wash Plus+ function: increases the intensity of the wash cycle for greater cleaning performance
- ✓ Control panel with IP65 humidity protection.

### You will never WASH ALONE

- ✓ Tech-Services: our team of technicians will help you so that your machine is always ready for use.
- ✓ Design Services: tell us what your needs are and we will advise you.
- ✓ 60 years of experience and know-how at your disposal.

## INCLUDES

- ✓ Rinse aid pump.
- ✓ 1 mixed basket (plates).
- ✓ 1 glasses basket.
- ✓ 1 cutlery basket.

## OPTIONAL

- ☐ Detergent dosing kit.
- ☐ Drainage pump with level sensor. Proactive tank water renewal.

## ACCESSORIES

- ☐ Tables for pass-through dishwashers
- ☐ Manual water softeners
- ☐ Automatic water softeners
- ☐ 500 x 500 mm baskets
- ☐ Inserts & supplements
- ☐ Central sorting tables
- ☐ Double connection central sorting table
- ☐ Prewashing tables for pass-through and rack conveyor dishwashers
- ☐ Connecting tables for pass-through dishwashers and rack conveyors
- ☐ Reverse osmosis devices OS-140
- ☐ Dosing equipments for AX / UX hood-type dishwashers

## SPECIFICATIONS

Basket dimensions: 500 mm x 500 mm  
Useful height: 430 mm

Cycles: 6  
Cycle duration: 60/90/100/150/210"  
Production baskets / hour: 60/40/36/24/17

Boiler capacity: 12 l  
Wash tank capacity: 25 l

### Consumption and savings

- ✓ Water consumption/cycle: 2.8 l
- ✓ Automatic saving mode in: 25'
- ✓ Automatic switch-off: 120'

### Loading

- ✓ Pump: 1000 W / 1.3 Hp
- ✓ Tank: 2500 W
- ✓ Boiler: 9000 W

# PASS-THROUGH DISHWASHER UX-120 ISO

Rack size 500 mm x 500 mm and door clearance 430 mm. Double-skinned hood.

✓ Total loading: 10000 W

## External dimensions (W x D x H)

✓ Width: 650 mm (Wide with handle: 725 mm)

✓ Depth: 756 mm (Bottom with handle: 835 mm)

✓ Height: 2000 mm / 1520 mm

Net weight: 116 kg

Rinse temperature: 87°C

Noise level (1m.): <70 dB(A)

## Crated dimensions

760 x 860 x 1530 mm

Gross weight: 127 kg

## AVAILABLE MODELS

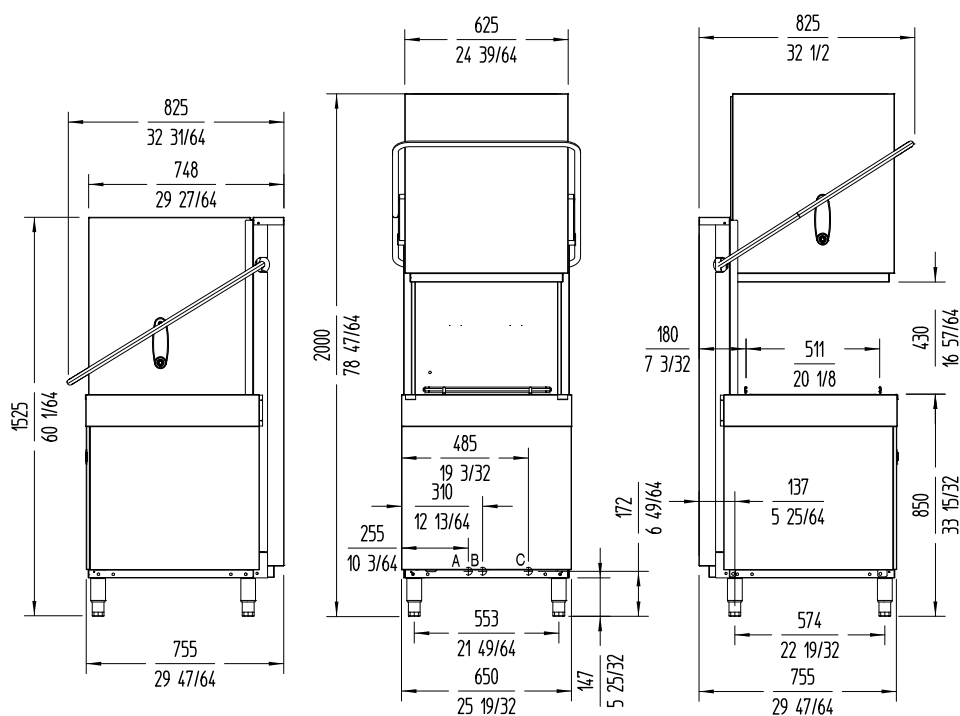
1303390 UX-120S 400/50/3N

1303393 UX-120S 220/60/3

1303394 UX-120SB 400/50/3N

1303397 UX-120SB 220/60/3

\* Ask for special versions availability



A: Entrada de agua 3/4" GAS.  
B: Tubo de desague Ø30 mm.  
C: Cable conexión.

# PASS-THROUGH DISHWASHER UX-120C ISO

Rack size 500 mm x 500 mm and door clearance 430 mm. Double-skinned hood.



## SALES DESCRIPTION

Sani-Control: guaranteed disinfection  
Double-walled hood: insulation and energy efficiency  
Exclusive Hydroblade™ washing arms: maximum effectiveness.  
3-stage filtering system.

### Sani-Control guarantee

- ✓ GUARANTEED DISINFECTION in compliance with standard DIN 10534.
- ✓ THERMAL LOCK function: Ensures that rinsing will be carried out at the ideal temperature to disinfect the dishes.
- ✓ CONSTANT HIGH TEMPERATURE RINSE system for optimal disinfection.
- ✓ The PRESSURE PUMP guarantees effective high-pressure rinsing
- ✓ WRAS certified.

### New recessed bodywork

- ✓ Ergonomic design with rounded corners to prevent the accumulation of dirt and facilitate cleaning.
- ✓ Compact tank volume (50% water saving compared to the previous range).

### Double-Walled (Ultra ISO)

- ✓ Double-Walled Structure: thermo-acoustic insulation to attenuate the sound level and improve energy efficiency

### Hydroblade™ washing arms

- ✓ Redesigned nozzles for greater washing performance.
- ✓ The “monoblock” design delivers durability and resistance to impacts.
- ✓ 30% savings in water consumption during rinsing compared to the previous range.

### 3-stage filter system: surface, tank and extraction

- ✓ Keeps the washing water in optimal conditions to maintain constant

washing performance.

### Designed to last

- ✓ “Flow” opening mechanism: allows the hood to be raised with less effort
- ✓ High load capacity 43 cm: suitable for GN 1/1 and Euronorm
- ✓ Stainless steel surface filters for greater stability and resistance during intensive use

### Premium warewashing

- ✓ Soft start: progressive start-up of the washing pump to protect fragile items.
- ✓ Colour LCD Display: intuitive communication of the machine status by means of messages, colour codes and icons.
- ✓ Dedicated cycles: selection of the ideal washing programme using icons.
- ✓ Adaptable: allows the main parameters of the machine to be adjusted to the needs of each user.
- ✓ TEMPERATURE DISPLAY
- ✓ Wash Plus+ function: increases the intensity of the wash cycle for greater cleaning performance
- ✓ Control panel with IP65 humidity protection.

### You will never WASH ALONE

- ✓ Tech-Services: our team of technicians will help you so that your machine is always ready for use.
- ✓ Design Services: tell us what your needs are and we will advise you.
- ✓ 60 years of experience and know-how at your disposal.

## INCLUDES

- ✓ Rinse aid pump.
- ✓ 1 glasses basket.
- ✓ 1 mixed basket (plates).
- ✓ 1 cutlery basket.
- ✓ Drainage pump with level sensor. Proactive tank water renewal.

## OPTIONAL

- ☐ Detergent dosing kit.
- ☐ Automatic resin regeneration water softener with salt detector.

## ACCESSORIES

- ☐ Tables for pass-through dishwashers
- ☐ Manual water softeners
- ☐ Automatic water softeners
- ☐ 500 x 500 mm baskets
- ☐ Inserts & supplements
- ☐ Central sorting tables
- ☐ Double connection central sorting table
- ☐ Prewashing tables for pass-through and rack conveyor dishwashers
- ☐ Connecting tables for pass-through dishwashers and rack conveyors
- ☐ Reverse osmosis devices OS-140
- ☐ Dosing equipments for AX / UX hood-type dishwashers

## SPECIFICATIONS

Basket dimensions: 500 mm x 500 mm  
Useful height: 430 mm

Cycles: 6  
Cycle duration: 60/90/100/150/210"  
Production baskets / hour: 60/40/36/24/17

Boiler capacity: 12 l  
Wash tank capacity: 25 l

### Consumption and savings

- ✓ Water consumption/cycle: 2.8 l
- ✓ Automatic saving mode in: 25'



✓ Automatic switch-off: 120'

**Loading**

- ✓ Pump: 1000 W / 1.3 Hp
- ✓ Tank: 2500 W
- ✓ Boiler: 9000 W
- ✓ Total loading: 10000 W

**External dimensions (W x D x H)**

- ✓ Width: 650 mm (Wide with handle: 725 mm)
- ✓ Depth: 755 mm (Bottom with handle: 835 mm)
- ✓ Height: 2000 mm / 1520 mm

Net weight: 135 kg

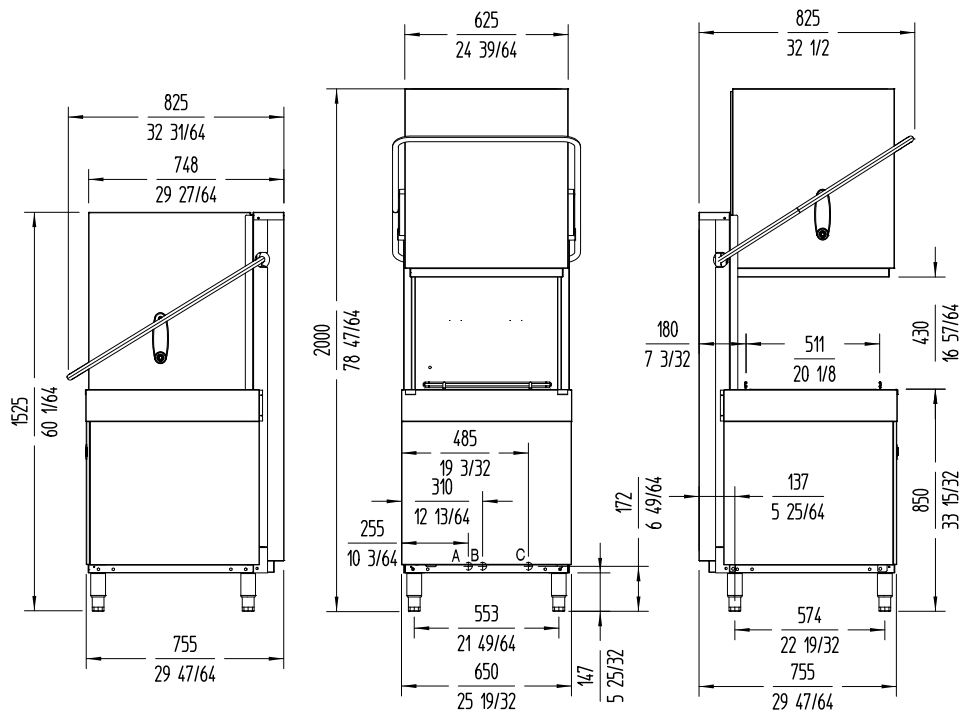
Rinse temperature: 87°C  
Noise level (1m.): <70 dB(A)

**Crated dimensions**

760 x 860 x 1530 mm  
Gross weight: 146 kg

**AVAILABLE MODELS**

\* Ask for special versions availability



# PASS-THROUGH DISHWASHER UX-120V ISO

Rack size 500 mm x 500 mm and door clearance 430 mm. Double-skinned hood.



## SALES DESCRIPTION

Sani-Control: guaranteed disinfection  
Double-walled hood: insulation and energy efficiency  
Exclusive Hydroblade™ washing arms: maximum effectiveness.  
3-stage filtering system.  
Steam condenser: environmental improvement and energy efficiency.

### Sani-Control guarantee

- ✓ GUARANTEED DISINFECTION in compliance with standard DIN 10534.
- ✓ THERMAL LOCK function: Ensures that rinsing will be carried out at the ideal temperature to disinfect the dishes.

### Steam condenser

- ✓ Reduces the steam released into the installation by 75%.
- ✓ Factory-integrated condenser module, no installation required.

### New recessed bodywork

- ✓ Ergonomic design with rounded corners to prevent the accumulation of dirt and facilitate cleaning.
- ✓ Compact tank volume (50% water saving compared to the previous range).

### Double-Walled (Ultra ISO)

- ✓ Double-Walled Structure: thermo-acoustic insulation to attenuate the sound level and improve energy efficiency

### Hydroblade™ washing arms

- ✓ Redesigned nozzles for greater washing performance.
- ✓ The “monoblock” design delivers durability and resistance to impacts.
- ✓ 30% savings in water consumption during rinsing compared to the previous range.

### 3-stage filter system: surface, tank and extraction

- ✓ Keeps the washing water in optimal conditions to maintain constant washing performance.

### Designed to last

- ✓ “Flow” opening mechanism: allows the hood to be raised with less effort
- ✓ High load capacity 43 cm: suitable for GN 1/1 and Euronorm
- ✓ Stainless steel surface filters for greater stability and resistance during intensive use

### Premium warewashing

- ✓ Soft start: progressive start-up of the washing pump to protect fragile items.
- ✓ Colour LCD Display: intuitive communication of the machine status by means of messages, colour codes and icons.
- ✓ Dedicated cycles: selection of the ideal washing programme using icons.
- ✓ Adaptable: allows the main parameters of the machine to be adjusted to the needs of each user.
- ✓ TEMPERATURE DISPLAY
- ✓ Wash Plus+ function: increases the intensity of the wash cycle for greater cleaning performance
- ✓ Control panel with IP65 humidity protection.

### You will never WASH ALONE

- ✓ Tech-Services: our team of technicians will help you so that your machine is always ready for use.
- ✓ Design Services: tell us what your needs are and we will advise you.
- ✓ 60 years of experience and know-how at your disposal.

## INCLUDES

- ✓ Rinse aid pump.
- ✓ 1 glasses basket.
- ✓ 1 mixed basket (plates).
- ✓ 1 cutlery basket.
- ✓ Drainage pump with level sensor. Proactive tank water renewal.

## OPTIONAL

- ☐ Detergent dosing kit.
- ☐ Automatic resin regeneration water softener with salt detector.

## ACCESSORIES

- ☐ Tables for pass-through dishwashers
- ☐ Manual water softeners
- ☐ Automatic water softeners
- ☐ 500 x 500 mm baskets
- ☐ Inserts & supplements
- ☐ Central sorting tables
- ☐ Double connection central sorting table
- ☐ Prewashing tables for pass-through and rack conveyor dishwashers
- ☐ Connecting tables for pass-through dishwashers and rack conveyors
- ☐ Reverse osmosis devices OS-140
- ☐ Dosing equipments for AX / UX hood-type dishwashers

## SPECIFICATIONS

Basket dimensions: 500 mm x 500 mm

Useful height: 430 mm

Cycles: 6

Cycle duration: 60/90/100/150/210”

Production baskets / hour: 60/40/36/24/17

Boiler capacity: 12 l

Wash tank capacity: 25 l

### Consumption and savings

- ✓ Water consumption/cycle: 2.8 l
- ✓ Automatic saving mode in: 25'
- ✓ Automatic switch-off: 120'

#### Loading

- ✓ Pump: 1000 W / 1.3 Hp
- ✓ Tank: 2500 W
- ✓ Boiler: 9000 W
- ✓ Total loading: 10000 W

#### External dimensions (W x D x H)

- ✓ Width: 650 mm (Wide with handle: 725 mm)
- ✓ Depth: 755 mm (Bottom with handle: 835 mm)

- ✓ Height: 2035 mm / 2035 mm

Net weight: 150 kg

Rinse temperature: 87°C

Noise level (1m.): <70 dB(A)

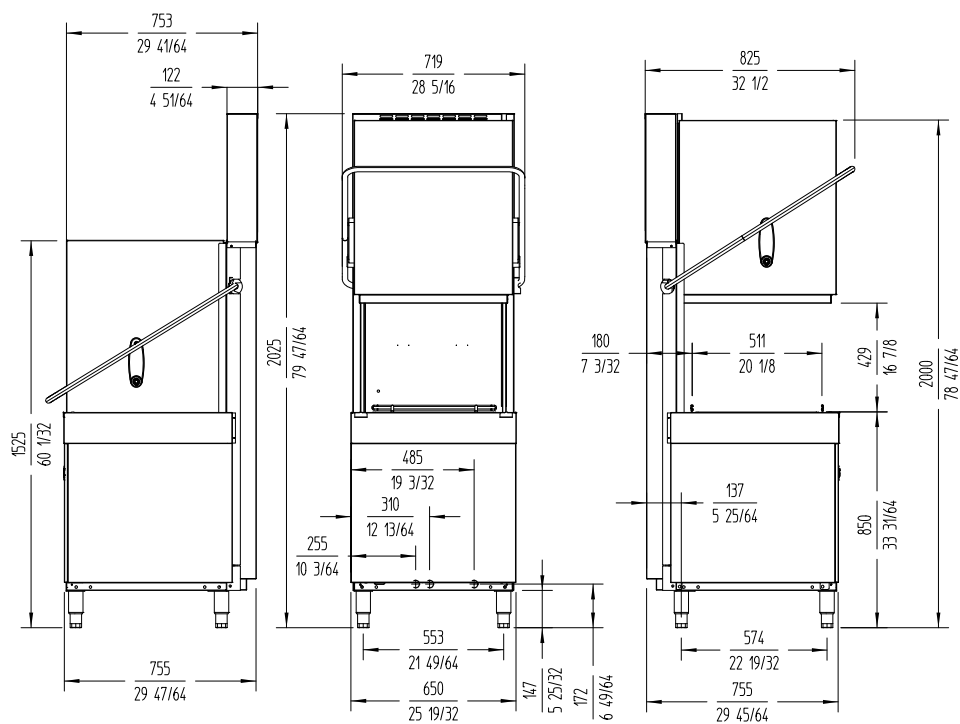
#### Crated dimensions

760 x 860 x 2050 mm

Gross weight: 161 kg

### AVAILABLE MODELS

\* Ask for special versions availability



# PASS-THROUGH DISHWASHER UX-120CV ISO

Rack size 500 mm x 500 mm and door clearance 430 mm. Double-skinned hood.



## SALES DESCRIPTION

Sani-Control: guaranteed disinfection  
Double-walled hood: insulation and energy efficiency  
Exclusive Hydroblade™ washing arms: maximum effectiveness.  
3-stage filtering system.  
Steam condenser: environmental improvement and energy efficiency.

### Sani-Control guarantee

- ✓ GUARANTEED DISINFECTION in compliance with standard DIN 10534.
- ✓ THERMAL LOCK function: Ensures that rinsing will be carried out at the ideal temperature to disinfect the dishes.
- ✓ CONSTANT HIGH TEMPERATURE RINSE system for optimal disinfection.
- ✓ The PRESSURE PUMP guarantees effective high-pressure rinsing
- ✓ WRAS certified.

### Steam condenser

- ✓ Reduces the steam released into the installation by 75%.
- ✓ Factory-integrated condenser module, no installation required.

### New recessed bodywork

- ✓ Ergonomic design with rounded corners to prevent the accumulation of dirt and facilitate cleaning.
- ✓ Compact tank volume (50% water saving compared to the previous range).

### Double-Walled (Ultra ISO)

- ✓ Double-Walled Structure: thermo-acoustic insulation to attenuate the sound level and improve energy efficiency

### Hydroblade™ washing arms

- ✓ Redesigned nozzles for greater washing performance.
- ✓ The “monoblock” design delivers durability and resistance to im-

pacts.

- ✓ 30% savings in water consumption during rinsing compared to the previous range.

### 3-stage filter system: surface, tank and extraction

- ✓ Keeps the washing water in optimal conditions to maintain constant washing performance.

### Designed to last

- ✓ “Flow” opening mechanism: allows the hood to be raised with less effort
- ✓ High load capacity 43 cm: suitable for GN 1/1 and Euronorm
- ✓ Stainless steel surface filters for greater stability and resistance during intensive use

### Premium warewashing

- ✓ Soft start: progressive start-up of the washing pump to protect fragile items.
- ✓ Colour LCD Display: intuitive communication of the machine status by means of messages, colour codes and icons.
- ✓ Dedicated cycles: selection of the ideal washing programme using icons.
- ✓ Adaptable: allows the main parameters of the machine to be adjusted to the needs of each user.
- ✓ TEMPERATURE DISPLAY
- ✓ Wash Plus+ function: increases the intensity of the wash cycle for greater cleaning performance
- ✓ Control panel with IP65 humidity protection.

### You will never WASH ALONE

- ✓ Tech-Services: our team of technicians will help you so that your machine is always ready for use.
- ✓ Design Services: tell us what your needs are and we will advise you.
- ✓ 60 years of experience and know-how at your disposal.

## INCLUDES

- ✓ Rinse aid pump.
- ✓ 1 glasses basket.
- ✓ 1 mixed basket (plates).
- ✓ 1 cutlery basket.
- ✓ Drainage pump with level sensor. Proactive tank water renewal.

## OPTIONAL

- ☐ Detergent dosing kit.
- ☐ Automatic resin regenera-
- tion water softener with salt detector.

## ACCESSORIES

- ☐ Tables for pass-through dishwashers
- ☐ Manual water softeners
- ☐ Automatic water softeners
- ☐ 500 x 500 mm baskets
- ☐ Inserts & supplements
- ☐ Central sorting tables
- ☐ Double connection central sorting table
- ☐ Prewashing tables for pass-through and rack conveyor dishwashers
- ☐ Connecting tables for pass-through dishwashers and rack conveyors
- ☐ Reverse osmosis devices OS-140
- ☐ Dosing equipments for AX / UX hood-type dishwashers

## SPECIFICATIONS

Basket dimensions: 500 mm x 500 mm

Useful height: 430 mm

Cycles: 6

Cycle duration: 60/90/100/150/210"

Production baskets / hour: 60/40/36/24/17

Boiler capacity: 12 l  
Wash tank capacity: 25 l

### Consumption and savings

- ✓ Water consumption/cycle: 2.8 l
- ✓ Automatic saving mode in: 25'
- ✓ Automatic switch-off: 120'

### Loading

- ✓ Pump: 1000 W / 1.3 Hp
- ✓ Tank: 2500 W
- ✓ Boiler: 9000 W
- ✓ Total loading: 10000 W

### External dimensions (W x D x H)

- ✓ Width: 650 mm (Wide with handle: 725 mm)
- ✓ Depth: 755 mm (Bottom with handle: 835 mm)

✓ Height: 2035 mm / 2035 mm

Net weight: 159 kg

Rinse temperature: 87°C

Noise level (1m.): <70 dB(A)

### Crated dimensions

760 x 860 x 2050 mm

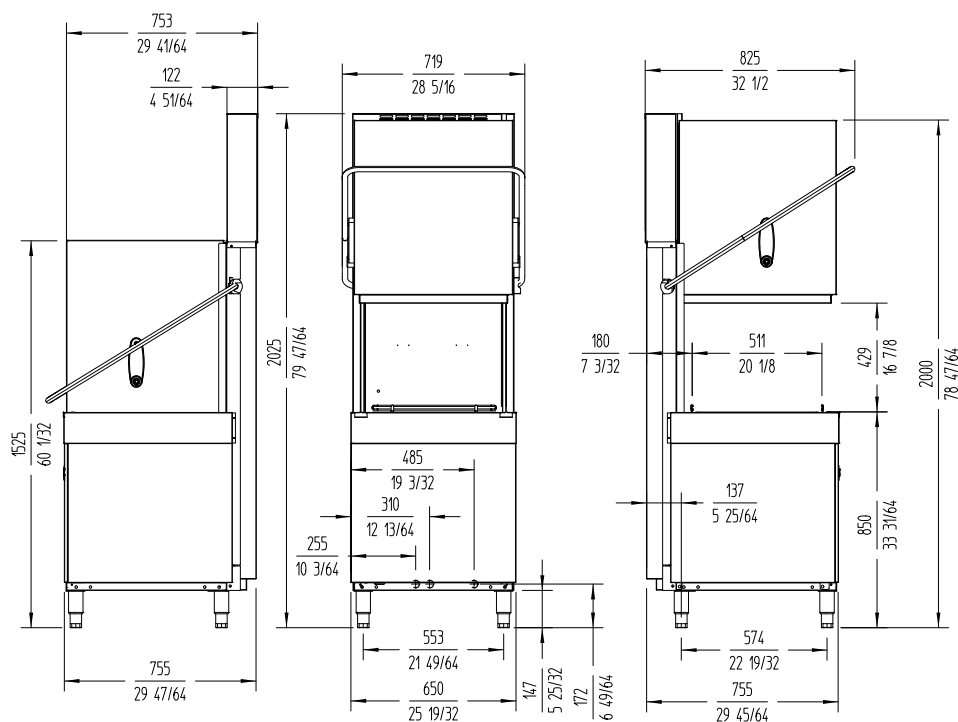
Gross weight: 170 kg

## AVAILABLE MODELS

1303418 UX-120SBCV 220/60/3 DD

1303423 UX-120SBCDV 220/60/3 DD

\* Ask for special versions availability



# PASS-THROUGH DISHWASHER UX-130BC DD

Rack size 500 mm x 500 mm and door clearance 430 mm.



## SALES DESCRIPTION

- ✓ Top panel.
- ✓ Sani-Control: guaranteed disinfection.
- ✓ Exclusive Hydroblade™ washing arms: maximum effectiveness.
- ✓ 3-stage filtering system.

### Sani-Control guarantee

- ✓ GUARANTEED DISINFECTION in compliance with standard DIN 10534.
- ✓ THERMAL LOCK function: Ensures that rinsing will be carried out at the ideal temperature to disinfect the dishes.
- ✓ CONSTANT HIGH TEMPERATURE RINSE system for optimal disinfection.
- ✓ The PRESSURE PUMP guarantees effective high-pressure rinsing
- ✓ WRAS certified.

### New recessed bodywork

- ✓ Ergonomic design with rounded corners to prevent the accumulation of dirt and facilitate cleaning.
- ✓ Compact tank volume (50% water saving compared to the previous range).

### Hydroblade™ washing arms

- ✓ Redesigned nozzles for greater washing performance.
- ✓ The “monoblock” design delivers durability and resistance to impacts.
- ✓ 30% savings in water consumption during rinsing compared to the previous range.

### 3-stage filter system: surface, tank and extraction

- ✓ Keeps the washing water in optimal conditions to maintain constant washing performance.

### Designed to last

- ✓ “Flow” opening mechanism: allows the hood to be raised with less effort
- ✓ High load capacity 43 cm: suitable for GN 1/1 and Euronorm
- ✓ Stainless steel surface filters for greater stability and resistance during intensive use

### Premium warewashing

- ✓ Soft start: progressive start-up of the washing pump to protect fragile items.
- ✓ Top panel: it allows quick and intuitive reading of information, ideal for corner installations.
- ✓ Colour LCD Display: intuitive communication of the machine status by means of messages, colour codes and icons.
- ✓ Dedicated cycles: selection of the ideal washing programme using icons.
- ✓ Adaptable: allows the main parameters of the machine to be adjusted to the needs of each user.
- ✓ TEMPERATURE DISPLAY
- ✓ Wash Plus+ function: increases the intensity of the wash cycle for greater cleaning performance
- ✓ Control panel with IP65 humidity protection.

### You will never WASH ALONE

- ✓ Tech-Services: our team of technicians will help you so that your machine is always ready for use.
- ✓ Design Services: tell us what your needs are and we will advise you.
- ✓ 60 years of experience and know-how at your disposal.

## INCLUDES

- ✓ Peristaltic detergent pump.
- ✓ Drainage pump with level sensor. Proactive tank water renewal.
- ✓ Type-A air break. WRAS approved break tank.
- ✓ Rinse aid pump.
- ✓ 1 glasses basket.
- ✓ 1 mixed basket (plates).
- ✓ 1 cutlery basket.

## ACCESSORIES

- ☐ Tables for pass-through dishwashers
- ☐ Manual water softeners
- ☐ Automatic water softeners
- ☐ 500 x 500 mm baskets
- ☐ Inserts & supplements
- ☐ Central sorting tables
- ☐ Double connection central sorting table
- ☐ Prewashing tables for pass-through and rack conveyor dishwashers
- ☐ Connecting tables for pass-through dishwashers and rack conveyors
- ☐ Reverse osmosis devices OS-140
- ☐ Dosing equipments for AX / UX hood-type dishwashers

## SPECIFICATIONS

Basket dimensions: 500 mm x 500 mm

Useful height: 430 mm

Cycles: 6

Cycle duration: 60 / 90 / 100 / 150 / 210"

Production baskets / hour: 60 / 40 / 36 / 24 / 17

Boiler capacity: 12 l

Wash tank capacity: 25 l

### Consumption and savings

- ✓ Water consumption/cycle: 2.8 l
- ✓ Automatic saving mode in: 25'



✓ Automatic switch-off: 120'

**Energy consumption**

**Water consumption/cycle (kWh): [v:cons\_ciclo\_kwh]**  
**Tank filling consumption (kWh): [v:cons\_llenado\_cuba\_kwh]**

Loading\_\_

- ✓ Pump: 1000 W / 1.3 Hp
- ✓ Tank: 3000 W
- ✓ Boiler: 9000 W
- ✓ Total loading: 10000 W

**External dimensions (W x D x H)**

- ✓ Width: 650 mm (Wide with handle: 725 mm)
- ✓ Depth: 755 mm (Bottom with handle: 835 mm)

✓ Height: 2070 mm / 1600 mm

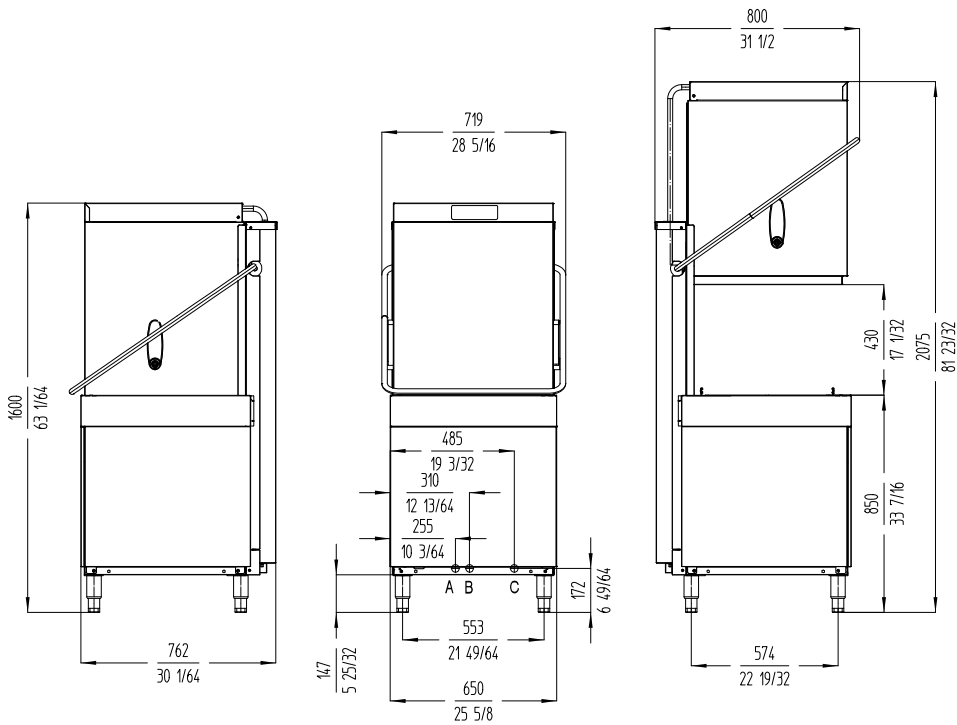
Wash temperature: 71°C  
Rinse temperature: 87°C  
Noise level (1m.): <70 dB(A)

Crated dimensions  
760 x 860 x 1630 mm  
Gross weight: 133 kg

**AVAILABLE MODELS**

1303430 UX-130BC 400/50/3N DD

*\* Ask for special versions availability*



A: Entrada de agua 3/4" GAS  
B: Tuboi de desagüe  
C: Cable conexión

# PASS-THROUGH DISHWASHERS UX-130BCV DD

Rack size 500 mm x 500 mm and door clearance 430 mm.



## SALES DESCRIPTION

Top panel.

Sani-Control: guaranteed disinfection.

Exclusive Hydroblade™ washing arms: maximum effectiveness.

3-stage filtering system.

Steam condenser: environmental improvement and energy efficiency.

### Sani-Control guarantee

- ✓ GUARANTEED DISINFECTION in compliance with standard DIN 10534.
- ✓ THERMAL LOCK function: Ensures that rinsing will be carried out at the ideal temperature to disinfect the dishes.
- ✓ CONSTANT HIGH TEMPERATURE RINSE system for optimal disinfection.
- ✓ The PRESSURE PUMP guarantees effective high-pressure rinsing.
- ✓ WRAS certified.

### Steam condenser

- ✓ Reduces the steam released into the installation by 75%.
- ✓ Factory-integrated condenser module, no installation required.

### New recessed bodywork

- ✓ Ergonomic design with rounded corners to prevent the accumulation of dirt and facilitate cleaning.
- ✓ Compact tank volume (50% water saving compared to the previous range).

### Hydroblade™ washing arms

- ✓ Redesigned nozzles for greater washing performance.
- ✓ The “monoblock” design delivers durability and resistance to impacts.
- ✓ 30% savings in water consumption during rinsing compared to the

previous range.

### 3-stage filter system: surface, tank and extraction

- ✓ Keeps the washing water in optimal conditions to maintain constant washing performance.

### Designed to last

- ✓ “Flow” opening mechanism: allows the hood to be raised with less effort
- ✓ High load capacity 43 cm: suitable for GN 1/1 and Euronorm
- ✓ Stainless steel surface filters for greater stability and resistance during intensive use

### Premium warewashing

- ✓ Soft start: progressive start-up of the washing pump to protect fragile items.
- ✓ Top panel: it allows quick and intuitive reading of information, ideal for corner installations.
- ✓ Colour LCD Display: intuitive communication of the machine status by means of messages, colour codes and icons.
- ✓ Dedicated cycles: selection of the ideal washing programme using icons.
- ✓ Adaptable: allows the main parameters of the machine to be adjusted to the needs of each user.
- ✓ TEMPERATURE DISPLAY
- ✓ Wash Plus+ function: increases the intensity of the wash cycle for greater cleaning performance
- ✓ Control panel with IP65 humidity protection.

### You will never WASH ALONE

- ✓ Tech-Services: our team of technicians will help you so that your machine is always ready for use.
- ✓ Design Services: tell us what your needs are and we will advise you.
- ✓ 60 years of experience and know-how at your disposal.

## INCLUDES

- ✓ Rinse aid pump.
- ✓ Detergent dispenser
- ✓ 1 glasses basket.
- ✓ 1 mixed basket (plates).
- ✓ 1 cutlery basket.
- ✓ Drainage pump with level sensor. Proactive tank water renewal.

## OPTIONAL

- ☐ Automatic resin regeneration water softener with salt detector.

## ACCESSORIES

- ☐ Tables for pass-through dishwashers
- ☐ Manual water softeners
- ☐ Automatic water softeners
- ☐ 500 x 500 mm baskets
- ☐ Inserts & supplements
- ☐ Central sorting tables
- ☐ Double connection central sorting table
- ☐ Prewashing tables for pass-through and rack conveyor dishwashers
- ☐ Connecting tables for pass-through dishwashers and rack conveyors
- ☐ Reverse osmosis devices OS-140
- ☐ Dosing equipments for AX / UX hood-type dishwashers

## SPECIFICATIONS

Basket dimensions: 500 mm x 500 mm

Useful height: 430 mm

Cycles: 6

Cycle duration: 60/90/100/150/210"

Production baskets / hour: 60 / 40 / 36 / 24 / 17



Boiler capacity: 12 l  
Wash tank capacity: 25 l

**Consumption and savings**

- ✓ Water consumption/cycle: 2.8 l
- ✓ Automatic saving mode in: 25'
- ✓ Automatic switch-off: 120'

**Energy consumption**

**Loading**

- ✓ Pump: 1000 W / 1.3 Hp

External dimensions (W x D x H)\_\_\_

- ✓ Width: 650 mm (Wide with handle: 725 mm)

- ✓ Depth: 755 mm (Bottom with handle: 835 mm)

- ✓ Height: 2035 mm / 2035 mm

Rinse temperature: 87°C

Crated dimensions  
760 x 860 x 2050 mm

**AVAILABLE MODELS**

1303431 Dishwasher UX-130BCV 400/50/3N DD

1303433 Dishwasher UX-130BCDV 400/50/3N DD

*\* Ask for special versions availability*



**SALES DESCRIPTION**

**SPECIFICATIONS**

Crated dimensions  
760 x 860 x 1600 mm

**AVAILABLE MODELS**

1303432 Dishwasher UX-130BCD 400/50/3N DD

*\* Ask for special versions availability*

**ACCESSORIES**

- ☐ Tables for pass-through dishwashers
- ☐ Manual water softeners
- ☐ Automatic water softeners
- ☐ 500 x 500 mm baskets
- ☐ Inserts & supplements
- ☐ Central sorting tables
- ☐ Double connection central sorting table
- ☐ Prewashing tables for pass-through and rack conveyor dishwashers
- ☐ Reverse osmosis devices OS-140
- ☐ Dosing equipments for AX / UX hood-type dishwashers

# HOOD TYPE DISHWASHER UX-130BC ISO DD

Rack size 500 mm x 500 mm and door clearance 430 mm. Double-skinned hood.



## SALES DESCRIPTION

Top panel.

Sani-Control: guaranteed disinfection.

Double-walled hood: insulation and energy efficiency.

Exclusive Hydroblade™ washing arms: maximum effectiveness.

3-stage filtering system.

### Sani-Control guarantee

- ✓ GUARANTEED DISINFECTION in compliance with standard DIN 10534.
- ✓ THERMAL LOCK function: Ensures that rinsing will be carried out at the ideal temperature to disinfect the dishes.
- ✓ CONSTANT HIGH TEMPERATURE RINSE system for optimal disinfection.
- ✓ The PRESSURE PUMP guarantees effective high-pressure rinsing
- ✓ WRAS certified.

### New recessed bodywork

- ✓ Ergonomic design with rounded corners to prevent the accumulation of dirt and facilitate cleaning.
- ✓ Compact tank volume (50% water saving compared to the previous range).

### Double-Walled (Ultra ISO)

- ✓ Double-Walled Structure: thermo-acoustic insulation to attenuate the sound level and improve energy efficiency

### Hydroblade™ washing arms

- ✓ Redesigned nozzles for greater washing performance.
- ✓ The “monoblock” design delivers durability and resistance to impacts.
- ✓ 30% savings in water consumption during rinsing compared to the previous range.

### 3-stage filter system: surface, tank and extraction

- ✓ Keeps the washing water in optimal conditions to maintain constant washing performance.

### Designed to last

- ✓ “Flow” opening mechanism: allows the hood to be raised with less effort
- ✓ High load capacity 43 cm: suitable for GN 1/1 and Euronorm
- ✓ Stainless steel surface filters for greater stability and resistance during intensive use

### Premium warewashing

- ✓ Soft start: progressive start-up of the washing pump to protect fragile items.
- ✓ Top panel: it allows quick and intuitive reading of information, ideal for corner installations.
- ✓ Colour LCD Display: intuitive communication of the machine status by means of messages, colour codes and icons.
- ✓ Dedicated cycles: selection of the ideal washing programme using icons.
- ✓ Adaptable: allows the main parameters of the machine to be adjusted to the needs of each user.
- ✓ TEMPERATURE DISPLAY
- ✓ Wash Plus+ function: increases the intensity of the wash cycle for greater cleaning performance
- ✓ Control panel with IP65 humidity protection.

### You will never WASH ALONE

- ✓ Tech-Services: our team of technicians will help you so that your machine is always ready for use.
- ✓ Design Services: tell us what your needs are and we will advise you.
- ✓ 60 years of experience and know-how at your disposal.

## INCLUDES

- ✓ Rinse aid pump.
- ✓ Detergent Dispenser
- ✓ 1 glasses basket.
- ✓ 1 mixed basket (plates).
- ✓ 1 cutlery basket.
- ✓ Drainage pump with level sensor. Proactive tank water renewal.

## OPTIONAL

- ☐ Automatic resin regeneration water softener with salt detector.

## ACCESSORIES

- ☐ Tables for pass-through dishwashers
- ☐ Manual water softeners
- ☐ Automatic water softeners
- ☐ 500 x 500 mm baskets
- ☐ Inserts & supplements
- ☐ Central sorting tables
- ☐ Double connection central sorting table
- ☐ Prewashing tables for pass-through and rack conveyor dishwashers
- ☐ Connecting tables for pass-through dishwashers and rack conveyors
- ☐ Reverse osmosis devices OS-140

## SPECIFICATIONS

Basket dimensions: 500 mm x 500 mm

Useful height: 430 mm

Cycles: 6

Cycle duration: 60/90/100/150/210"

Production baskets / hour: 60 / 40 / 36 / 24 / 17

Boiler capacity: 12 l

Wash tank capacity: 25 l

Consumption and savings

- ✓ Water consumption/cycle: 2.8 l
- ✓ Automatic saving mode in: 25'
- ✓ Automatic switch-off: 120'

Energy consumption

Loading

- ✓ Pump: 1000 W / 1.3 Hp
- ✓ Tank: 3000 W
- ✓ Boiler: 9000 W
- ✓ Total loading: 10000 W

External dimensions (W x D x H)\_\_\_

- ✓ Width:650 mm (Wide with handle: 725 mm)
- ✓ Depth: 755 mm (Bottom with handle: 835 mm)

- ✓ Height: 2070 mm / 1525 mm

Net weight: 139 kg

Wash temperature: 70°C

Rinse temperature: 87°C

Crated dimensions

760 x 860 x 1600 mm

Gross weight: 150 kg

AVAILABLE MODELS

1303436	Dishwasher UX-130SBCD 400/50/3N DD
---------	------------------------------------

1303434 Dishwasher UX-130SBC 400/50/3N DD

\* Ask for special versions availability

# HOOD TYPE DISHWASHER UX-130BCV ISO DD

Rack size 500 mm x 500 mm and door clearance 440 mm. Double-skinned hood.



## SALES DESCRIPTION

Top panel.

Sani-Control: guaranteed disinfection.

Double-walled hood: insulation and energy efficiency.

Exclusive Hydroblade™ washing arms: maximum effectiveness.

3-stage filtering system.

Steam condenser: environmental improvement and energy efficiency.

### Sani-Control guarantee

- ✓ GUARANTEED DISINFECTION in compliance with standard DIN 10534.
- ✓ THERMAL LOCK function: Ensures that rinsing will be carried out at the ideal temperature to disinfect the dishes.
- ✓ CONSTANT HIGH TEMPERATURE RINSE system for optimal disinfection.
- ✓ The PRESSURE PUMP guarantees effective high-pressure rinsing.
- ✓ WRAS certified.

### Steam condenser

- ✓ Reduces the steam released into the installation by 75%.
- ✓ Factory-integrated condenser module, no installation required.

### New recessed bodywork

- ✓ Ergonomic design with rounded corners to prevent the accumulation of dirt and facilitate cleaning.
- ✓ Compact tank volume (50% water saving compared to the previous range).

### Double-Walled (Ultra ISO)

- ✓ Double-Walled Structure: thermo-acoustic insulation to attenuate the sound level and improve energy efficiency

### Hydroblade™ washing arms

- ✓ Redesigned nozzles for greater washing performance.
- ✓ The “monoblock” design delivers durability and resistance to impacts.
- ✓ 30% savings in water consumption during rinsing compared to the previous range.

### 3-stage filter system: surface, tank and extraction

- ✓ Keeps the washing water in optimal conditions to maintain constant washing performance.

### Designed to last

- ✓ “Flow” opening mechanism: allows the hood to be raised with less effort
- ✓ High load capacity 43 cm: suitable for GN 1/1 and Euronorm
- ✓ Stainless steel surface filters for greater stability and resistance during intensive use

### Premium warewashing

- ✓ Soft start: progressive start-up of the washing pump to protect fragile items.
- ✓ Top panel: it allows quick and intuitive reading of information, ideal for corner installations.
- ✓ Colour LCD Display: intuitive communication of the machine status by means of messages, colour codes and icons.
- ✓ Dedicated cycles: selection of the ideal washing programme using icons.
- ✓ Adaptable: allows the main parameters of the machine to be adjusted to the needs of each user.
- ✓ TEMPERATURE DISPLAY
- ✓ Wash Plus+ function: increases the intensity of the wash cycle for greater cleaning performance
- ✓ Control panel with IP65 humidity protection.

### You will never WASH ALONE

- ✓ Tech-Services: our team of technicians will help you so that your machine is always ready for use.
- ✓ Design Services: tell us what your needs are and we will advise you.
- ✓ 60 years of experience and know-how at your disposal.

## INCLUDES

- ✓ Rinse aid pump.
- ✓ Detergent Dispenser
- ✓ 1 glasses basket.
- ✓ 1 mixed basket (plates).
- ✓ 1 cutlery basket.
- ✓ Drainage pump with level sensor. Proactive tank water renewal.

## OPTIONAL

- ☐ Automatic resin regeneration water softener with salt detector.

## ACCESSORIES

- ☐ Tables for pass-through dishwashers
- ☐ Manual water softeners
- ☐ Automatic water softeners
- ☐ 500 x 500 mm baskets
- ☐ Inserts & supplements
- ☐ Central sorting tables
- ☐ Double connection central sorting table
- ☐ Prewashing tables for pass-through and rack conveyor dishwashers
- ☐ Connecting tables for pass-through dishwashers and rack conveyors
- ☐ Reverse osmosis devices OS-140

## SPECIFICATIONS

Basket dimensions: 500 mm x 500 mm



Useful height: 440 mm  
Cycles: 6  
Cycle duration: 60/90/100/150/210"  
Production baskets / hour: 60 / 40 / 36 / 24 / 17  
Boiler capacity: 12 l  
Wash tank capacity: 23 l

**Consumption and savings**

- ✓ Water consumption/cycle: 2.7 l
- ✓ Automatic saving mode in: 25'
- ✓ Automatic switch-off: 120'

**Energy consumption**

- Loading\_\_
- ✓ Pump: 1000 W / 1.33 Hp
  - ✓ Tank: 2500 W
  - ✓ Boiler: 9000 W
  - ✓ Total loading: 9000 W

External dimensions (W x D x H)\_\_\_

- ✓ Width:640 mm (Wide with handle: 732 mm)
- ✓ Depth: 756 mm (Bottom with handle: 860 mm)
- ✓ Height: 1920 mm / 1468 mm

Net weight: 143 kg

Wash temperature: 65°C  
Rinse temperature: 90°C  
Noise level (1m.): 65 dB(A)

Crated dimensions  
760 x 860 x 1500 mm  
Gross weight: 154 kg

AVAILABLE MODELS	
1303437	UX-130SBCV 400/50/3N DD

*\* Ask for special versions availability*

# HOOD TYPE DISHWASHER UX-130BCDV ISO DD

Rack size 500 mm x 500 mm and door clearance 430 mm. Double-skinned hood.



## SALES DESCRIPTION

Top panel.

Sani-Control: guaranteed disinfection.

Double-walled hood: insulation and energy efficiency.

Exclusive Hydroblade™ washing arms: maximum effectiveness.

3-stage filtering system.

Steam condenser: environmental improvement and energy efficiency.

### Sani-Control guarantee

- ✓ GUARANTEED DISINFECTION in compliance with standard DIN 10534.
- ✓ THERMAL LOCK function: Ensures that rinsing will be carried out at the ideal temperature to disinfect the dishes.
- ✓ CONSTANT HIGH TEMPERATURE RINSE system for optimal disinfection.
- ✓ The PRESSURE PUMP guarantees effective high-pressure rinsing.
- ✓ WRAS certified.

### Steam condenser

- ✓ Reduces the steam released into the installation by 75%.
- ✓ Factory-integrated condenser module, no installation required.

### New recessed bodywork

- ✓ Ergonomic design with rounded corners to prevent the accumulation of dirt and facilitate cleaning.
- ✓ Compact tank volume (50% water saving compared to the previous range).

### Double-Walled (Ultra ISO)

- ✓ Double-Walled Structure: thermo-acoustic insulation to attenuate the sound level and improve energy efficiency

### Hydroblade™ washing arms

- ✓ Redesigned nozzles for greater washing performance.
- ✓ The “monoblock” design delivers durability and resistance to impacts.
- ✓ 30% savings in water consumption during rinsing compared to the previous range.

### 3-stage filter system: surface, tank and extraction

- ✓ Keeps the washing water in optimal conditions to maintain constant washing performance.

### Designed to last

- ✓ “Flow” opening mechanism: allows the hood to be raised with less effort
- ✓ High load capacity 43 cm: suitable for GN 1/1 and Euronorm
- ✓ Stainless steel surface filters for greater stability and resistance during intensive use

### Premium warewashing

- ✓ Soft start: progressive start-up of the washing pump to protect fragile items.
- ✓ Top panel: it allows quick and intuitive reading of information, ideal for corner installations.
- ✓ Colour LCD Display: intuitive communication of the machine status by means of messages, colour codes and icons.
- ✓ Dedicated cycles: selection of the ideal washing programme using icons.
- ✓ Adaptable: allows the main parameters of the machine to be adjusted to the needs of each user.
- ✓ TEMPERATURE DISPLAY
- ✓ Wash Plus+ function: increases the intensity of the wash cycle for greater cleaning performance
- ✓ Control panel with IP65 humidity protection.

### You will never WASH ALONE

- ✓ Tech-Services: our team of technicians will help you so that your machine is always ready for use.
- ✓ Design Services: tell us what your needs are and we will advise you.
- ✓ 60 years of experience and know-how at your disposal.

## INCLUDES

- ✓ Rinse aid pump.
- ✓ Detergent Dispenser.
- ✓ Drainage pump with level sensor. Proactive tank water renewal.
- ✓ Automatic resin regeneration water softener with salt detector.
- ✓ 1 glasses basket.
- ✓ 1 mixed basket (plates).
- ✓ 1 cutlery basket.

## ACCESSORIES

- ☐ Tables for pass-through dishwashers
- ☐ Manual water softeners
- ☐ Automatic water softeners
- ☐ 500 x 500 mm baskets
- ☐ Inserts & supplements
- ☐ Central sorting tables
- ☐ Double connection central sorting table
- ☐ Prewashing tables for pass-through and rack conveyor dishwashers
- ☐ Connecting tables for pass-through dishwashers and rack conveyors
- ☐ Reverse osmosis devices OS-140
- ☐ Dosing equipments for AX / UX hood-type dishwashers

## SPECIFICATIONS

# PASS-THROUGH DISHWASHER UX-150SBC ISO DD

Rack size 600 mm x 500 mm and door clearance 430 mm. Double-skinned hood.



## SALES DESCRIPTION

Top panel.  
Sani-Control: guaranteed disinfection.  
Double-walled hood: insulation and energy efficiency.  
High-performance stainless steel wash arms.  
3-stage filtering system.

### Sani-Control guarantee

- ✓ GUARANTEED DISINFECTION in compliance with standard DIN 10534.
- ✓ THERMAL LOCK function: Ensures that rinsing will be carried out at the ideal temperature to disinfect the dishes.
- ✓ CONSTANT HIGH TEMPERATURE RINSE system for optimal disinfection.
- ✓ The PRESSURE PUMP guarantees effective high-pressure rinsing
- ✓ WRAS certified.

### New recessed bodywork

- ✓ Ergonomic design with rounded corners to prevent the accumulation of dirt and facilitate cleaning.
- ✓ Compact tank volume (50% water saving compared to the previous range).

### Double-Walled (Ultra ISO)

- ✓ Double-Walled Structure: thermo-acoustic insulation to attenuate the sound level and improve energy efficiency

### High performance washing arms

- ✓ Stainless steel nozzles that ensure the distribution of washing water with proper angles and precise jets.
- ✓ Optimal washing results.
- ✓ Easy removal of the diffusers without tools for maintenance and cleaning.

### 3-stage filter system: surface, tank and extraction

- ✓ Keeps the washing water in optimal conditions to maintain constant washing performance.

### Designed to last

- ✓ "Flow" opening mechanism: allows the hood to be raised with less effort
- ✓ High load capacity 43 cm: suitable for GN 1/1 and Euronorm
- ✓ Stainless steel surface filters for greater stability and resistance during intensive use

### Premium warewashing

- ✓ Soft start: progressive start-up of the washing pump to protect fragile items.
- ✓ Top panel: it allows quick and intuitive reading of information, ideal for corner installations.
- ✓ Colour LCD Display: intuitive communication of the machine status by means of messages, colour codes and icons.
- ✓ Dedicated cycles: selection of the ideal washing programme using icons.
- ✓ Adaptable: allows the main parameters of the machine to be adjusted to the needs of each user.
- ✓ TEMPERATURE DISPLAY
- ✓ Wash Plus+ function: increases the intensity of the wash cycle for greater cleaning performance
- ✓ Control panel with IP65 humidity protection.

### You will never WASH ALONE

- ✓ Tech-Services: our team of technicians will help you so that your machine is always ready for use.
- ✓ Design Services: tell us what your needs are and we will advise you.
- ✓ 60 years of experience and know-how at your disposal.

## INCLUDES

- ✓ Rinse aid pump.
- ✓ Drainage pump with level sensor. Proactive tank water renewal.
- ✓ Detergent Dispenser
- ✓ 1 basket for glasses and pots.
- ✓ 1 basket for plates.
- ✓ 1 cutlery insert.

## ACCESSORIES

- ☐ Tables for pass-through dishwashers
- ☐ Inserts & supplements
- ☐ Central sorting tables
- ☐ Double connection central sorting table
- ☐ Prewashing tables for pass-through and rack conveyor dishwashers
- ☐ Connecting tables for pass-through dishwashers and rack conveyors
- ☐ Dosing equipments for AX / UX hood-type dishwashers
- ☐ Tables for connecting two hood-type dishwashers
- ☐ External control panel for UX pass-through dishwashers
- ☐ Special baskets for plastic glasses
- ☐ 600 x 500 mm baskets

## SPECIFICATIONS

Basket dimensions: 600 mm x 500 mm

Useful height: 430 mm

Cycles: 6

Cycle duration: 60 / 90 / 100 / 150 / 210"

Production baskets / hour: 60 / 40 / 36 / 24 / 17

Boiler capacity: 12 l

Wash tank capacity: 25 l

Consumption and savings

- ✓ Water consumption/cycle: 3 l
- ✓ Automatic saving mode in: [v:modo\_ahorro]
- ✓ Automatic switch-off: 120'

Energy consumption

Water consumption/cycle (kWh): [v:cons\_ciclo\_kwh]  
Tank filling consumption (kWh): [v:cons\_llenado\_cuba\_kwh]

Loading

- ✓ Pump: 1500 W / 2 Hp
- ✓ Tank: 3000 W
- ✓ Boiler: 9000 W
- ✓ Total loading: 10500 W

External dimensions (W x D x H)\_\_\_

- ✓ Width:730 mm (Wide with handle: 810 mm)

- ✓ Depth: 760 mm (Bottom with handle: 835 mm)
- ✓ Height: 2080 mm / 1572 mm

Wash temperature: 70°C  
Rinse temperature: 87°C  
Noise level (1m.): [v:nivel\_ruido]

Crated dimensions  
840 x 860 x 1600 mm  
Gross weight: 145 kg

AVAILABLE MODELS

1303460	UX-150SBC 400/50/3N DD
---------	------------------------

1303461    Pass-through dishwasher UX-150SBC 220/60/3 DD

*\* Ask for special versions availability*



# HOOD TYPE DISHWASHER UX-150BCV ISO DD

Rack size 500 mm x 500 mm and door clearance 430 mm. Double-skinned hood.



## SALES DESCRIPTION

Top panel.

Sani-Control: guaranteed disinfection.

Double-walled hood: insulation and energy efficiency.

High-performance stainless steel wash arms.

3-stage filtering system.

Steam condenser: environmental improvement and energy efficiency.

### Sani-Control guarantee

- ✓ GUARANTEED DISINFECTION in compliance with standard DIN 10534.
- ✓ THERMAL LOCK function: Ensures that rinsing will be carried out at the ideal temperature to disinfect the dishes.
- ✓ CONSTANT HIGH TEMPERATURE RINSE system for optimal disinfection.
- ✓ The PRESSURE PUMP guarantees effective high-pressure rinsing.
- ✓ WRAS certified.

### Steam condenser

- ✓ Reduces the steam released into the installation by 75%.
- ✓ Factory-integrated condenser module, no installation required.

### New recessed bodywork

- ✓ Ergonomic design with rounded corners to prevent the accumulation of dirt and facilitate cleaning.
- ✓ Compact tank volume (50% water saving compared to the previous range).

### Double-Walled (Ultra ISO)

- ✓ Double-Walled Structure: thermo-acoustic insulation to attenuate the sound level and improve energy efficiency

### High performance washing arms

- ✓ Stainless steel nozzles that ensure the distribution of washing water with proper angles and precise jets.
- ✓ Optimal washing results.
- ✓ Easy removal of the diffusers without tools for maintenance and cleaning.

### 3-stage filter system: surface, tank and extraction

- ✓ Keeps the washing water in optimal conditions to maintain constant washing performance.

### Designed to last

- ✓ "Flow" opening mechanism: allows the hood to be raised with less effort
- ✓ High load capacity 43 cm: suitable for GN 1/1 and Euronorm
- ✓ Stainless steel surface filters for greater stability and resistance during intensive use

### Premium warewashing

- ✓ Soft start: progressive start-up of the washing pump to protect fragile items.
- ✓ Top panel: it allows quick and intuitive reading of information, ideal for corner installations.
- ✓ Colour LCD Display: intuitive communication of the machine status by means of messages, colour codes and icons.
- ✓ Dedicated cycles: selection of the ideal washing programme using icons.
- ✓ Adaptable: allows the main parameters of the machine to be adjusted to the needs of each user.
- ✓ TEMPERATURE DISPLAY
- ✓ Wash Plus+ function: increases the intensity of the wash cycle for greater cleaning performance
- ✓ Control panel with IP65 humidity protection.

### You will never WASH ALONE

- ✓ Tech-Services: our team of technicians will help you so that your machine is always ready for use.
- ✓ Design Services: tell us what your needs are and we will advise you.
- ✓ 60 years of experience and know-how at your disposal.

## INCLUDES

- ✓ Rinse aid pump.
- ✓ Detergent Dispenser
- ✓ 1 glasses basket.
- ✓ 1 mixed basket (plates).
- ✓ 1 cutlery basket.
- ✓ Drainage pump with level sensor. Proactive tank water renewal.

## ACCESSORIES

- ☐ Tables for pass-through dishwashers
- ☐ Manual water softeners
- ☐ Automatic water softeners
- ☐ 500 x 500 mm baskets
- ☐ Central sorting tables
- ☐ Double connection central sorting table
- ☐ Prewashing tables for pass-through and rack conveyor dishwashers
- ☐ Connecting tables for pass-through dishwashers and rack conveyors
- ☐ Reverse osmosis devices OS-140
- ☐ Dosing equipments for AX / UX hood-type dishwashers

## SPECIFICATIONS

Basket dimensions: 500 mm x 500 mm  
Useful height: 430 mm

### Consumption and savings

### Energy consumption

### Loading

## По вопросам продаж и поддержки обращайтесь:

Алматы (727)345-47-04  
Ангарск (3955)60-70-56  
Архангельск (8182)63-90-72  
Астрахань (8512)99-46-04  
Барнаул (3852)73-04-60  
Белгород (4722)40-23-64  
Благовещенск (4162)22-76-07  
Брянск (4832)59-03-52  
Владивосток (423)249-28-31  
Владикавказ (8672)28-90-48  
Владимир (4922)49-43-18  
Волгоград (844)278-03-48  
Вологда (8172)26-41-59  
Воронеж (473)204-51-73  
Екатеринбург (343)384-55-89

Иваново (4932)77-34-06  
Ижевск (3412)26-03-58  
Иркутск (395)279-98-46  
Казань (843)206-01-48  
Калининград (4012)72-03-81  
Калуга (4842)92-23-67  
Кемерово (3842)65-04-62  
Киров (8332)68-02-04  
Коломна (4966)23-41-49  
Кострома (4942)77-07-48  
Краснодар (861)203-40-90  
Красноярск (391)204-63-61  
Курск (4712)77-13-04  
Курган (3522)50-90-47  
Липецк (4742)52-20-81

Магнитогорск (3519)55-03-13  
Москва (495)268-04-70  
Мурманск (8152)59-64-93  
Набережные Челны (8552)20-53-41  
Нижний Новгород (831)429-08-12  
Новокузнецк (3843)20-46-81  
Ноябрьск (3496)41-32-12  
Новосибирск (383)227-86-73  
Омск (3812)21-46-40  
Орел (4862)44-53-42  
Оренбург (3532)37-68-04  
Пенза (8412)22-31-16  
Петрозаводск (8142)55-98-37  
Псков (8112)59-10-37  
Пермь (342)205-81-47

Ростов-на-Дону (863)308-18-15  
Рязань (4912)46-61-64  
Самара (846)206-03-16  
Санкт-Петербург (812)309-46-40  
Саратов (845)249-38-78  
Севастополь (8692)22-31-93  
Саранск (8342)22-96-24  
Симферополь (3652)67-13-56  
Смоленск (4812)29-41-54  
Сочи (862)225-72-31  
Ставрополь (8652)20-65-13  
Сургут (3462)77-98-35  
Сыктывкар (8212)25-95-17  
Тамбов (4752)50-40-97  
Тверь (4822)63-31-35

Тольятти (8482)63-91-07  
Томск (3822)98-41-53  
Тула (4872)33-79-87  
Тюмень (3452)66-21-18  
Ульяновск (8422)24-23-59  
Улан-Удэ (3012)59-97-51  
Уфа (347)229-48-12  
Хабаровск (4212)92-98-04  
Чебоксары (8352)28-53-07  
Челябинск (351)202-03-61  
Череповец (8202)49-02-64  
Чита (3022)38-34-83  
Якутск (4112)23-90-97  
Ярославль (4852)69-52-93

**Россия** +7(495)268-04-70

**Казахстан** +(727)345-47-04

**Беларусь** +(375)257-127-884

**Узбекистан** +998(71)205-18-59

**Киргизия** +996(312)96-26-47

эл.почта: [sir@nt-rt.ru](mailto:sir@nt-rt.ru) || сайт: <https://sammic.nt-rt.ru/>